

Supplier's Product Code :
Product Added :
Last Updated by Supplier :
erudus id :

F62200 (8278)
02 October 2024
02 October 2024
2f1931846eccd452a99ddeab6fa67683d



The information on the Erudus System has been supplied by the manufacturers of the products and, whilst the owners of the Erudus System take steps to ensure the information is regularly updated, they give no warranty and no guarantee that the information is accurate. Product information and ingredients may change, please always read product labels carefully in addition to using the information provided by Erudus One.

We do not accept liability for any inaccuracies or incorrect information contained on this site. Please visit <http://www.erudus.com/terms-and-conditions> for full terms and conditions.

Chocolate Yule Log PP12 (2x 1 unit)

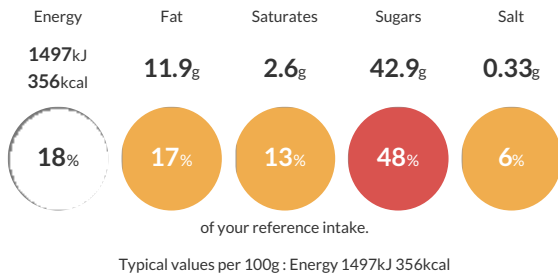
Short Product Name:
Chocolate Yule Log

A moist chocolate log split and sandwiched with rich chocolate fudge, the Yule log is covered with more fudge and sprinkled with sweet dextrose based sugar dusting. Pre-portioned into 12 slices.

Traded Unit GTIN: 05010823516973 Internal GTIN: Supplier: Mademoiselle Desserts (Taunton) Suppliers Product Code: F62200 (8278)

Reference Intake

Each 100g portion contains:



Nutritional Information

Typical Values	Per 100g
Energy	1497kJ 356kCal
Carbohydrates	57.3g
of which sugars	42.9g
Fat	11.9g
of which saturates	2.6g
Fibre	2.4g
Protein	4.5g
Salt	0.33g

Allergy Information

Key: Contains May Contain



Dietary Information

Key: Suitable for



Ingredients

Sugar, WHEAT Flour (WHEAT Flour, Calcium Carbonate, Niacin, Iron, Thiamin), Water, EGG, Vegetable Oils (Palm, Rapeseed, Palm Kernel), Fat Reduced Cocoa Powder, Glucose Syrup, Humectant (Glycerine), Margarine (Vegetable Oils (Palm, Rapeseed), Water, Emulsifier (Mono- and Diglycerides of Fatty Acids)), Dried Glucose Syrup, Skimmed MILK Powder, Emulsifier (Mono- and Diglycerides of Fatty Acids, Polyglycerol Esters of Fatty Acids, SOYA Lecithin), Raising Agent (Sodium Hydrogen Carbonate, Disodium Diphosphate), Invert Sugar Syrup, Dextrose, Whey Powder (MILK), WHEAT Flour, Maize Starch, Natural Flavouring, Acidity Regulator (Potassium Hydroxide).