

Supplier's Product Code :
 Product Added :
 Last Updated by Supplier :
 erudus id :

PA2203
 07 December 2012
 19 May 2022
 2f50398aeb2b44a388d81a2f44f6e4bb



The information on the Erudus System has been supplied by the manufacturers of the products and, whilst the owners of the Erudus System take steps to ensure the information is regularly updated, they give no warranty and no guarantee that the information is accurate. Product information and ingredients may change, please always read product labels carefully in addition to using the information provided by Erudus One.

We do not accept liability for any inaccuracies or incorrect information contained on this site. Please visit <http://www.erudus.com/terms-and-conditions> for full terms and conditions.

30 TRADITIONAL SHAPED BEEF & VEGETABLE PASTIES

Short Product Name:

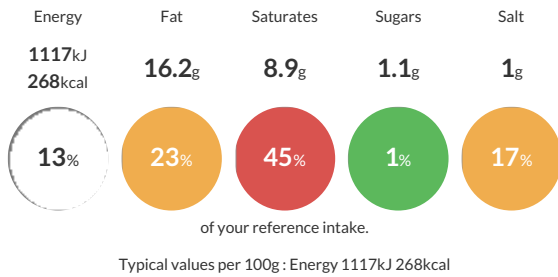
TRADITIONAL SHAPED BEEF & VEGETABLE PASTIES

Frozen unbaked puff pastry casing with a beef and vegetable filling topped with an egg glaze

Traded Unit GTIN: **5060146300285** Internal GTIN: Supplier: **David Wood Baking (Medway)** Suppliers Product Code: **PA2203**

Reference Intake

Each 100g portion contains:



Nutritional Information

Typical Values	Per 100g
Energy	1117kJ 268kCal
Carbohydrates	21.8g
of which sugars	1.1g
Fat	16.2g
of which saturates	8.9g
Fibre	1.6g
Protein	8.7g
Salt	1g

Allergy Information

Key: **Contains** **May Contain**



Dietary Information

Key: **Suitable for**



Allergen Statement

For allergens including cereals containing gluten see ingredients in **BOLD** and **CAPITAL LETTERS**.

May contain traces of milk & mustard

Ingredients

Water, Wheat flour (**WHEAT** Flour, Calcium Carbonate, Iron, Niacin, Thiamin), Margarine (Palm Oil, Water, Salt, Emulsifier: mono and Di- Glycerides of Fatty Acid (E471)). Beef (9.4%), Carrot (9.4%), Seasoning (Dehydrated Potato (**SULPHITES**), Defatted **SOYA**, Colour: Ammonia Caramel (E150c), Dehydrated Onion, Salt, Herbs (Marjoram, Sage, Thyme, Oregano), Spice (White Pepper), Flavourings), Potato (4.2%), Dehydrated Potato, Beef Fat, Beef Connective Tissue, Whole **EGG**, Salt, **EGG** Yolk

Each baked pastry contains 10.5% Beef, 10.3% Carrot & 4.6% Potato