

Supplier's Product Code :
 Product Added :
 Last Updated by Supplier :
 erudus id :

FBHUF12
 17 January 2025
 17 January 2025
 2fa281eb0b7744caa790b13c55da81bf



The information on the Erudus System has been supplied by the manufacturers of the products and, whilst the owners of the Erudus System take steps to ensure the information is regularly updated, they give no warranty and no guarantee that the information is accurate. Product information and ingredients may change, please always read product labels carefully in addition to using the information provided by Erudus One.

We do not accept liability for any inaccuracies or incorrect information contained on this site. Please visit <http://www.erudus.com/terms-and-conditions> for full terms and conditions.

BLUEBERRY & VANILLA LITTLE LOAF CAKE (RTA)

Short Product Name:

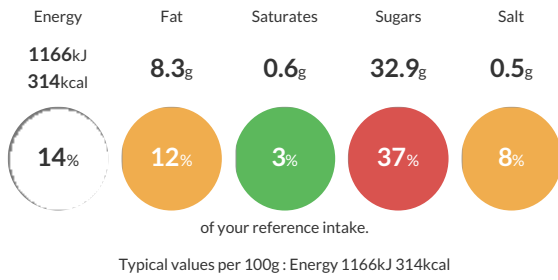
BLUEBERRY & VANILLA LITTLE LOAF CAKE

Frozen, fully baked, sweet cake including Blueberry Pieces and sugar nib topping.

Traded Unit GTIN: 5032633180120 Internal GTIN: Supplier: Speciality Breads Ltd Suppliers Product Code: FBHUF12

Reference Intake

Each 100g portion contains:



Nutritional Information

Typical Values	Per 100g
Energy	1166kJ 314kCal
Carbohydrates	56g
of which sugars	32.9g
Fat	8.3g
of which saturates	0.6g
Fibre	1.7g
Protein	3.5g
Salt	0.5g

Allergy Information

Key: Contains May Contain

Contains Cereal/Gluten	May Contain Milk	May Contain Eggs	Does Not Contain Peanuts	Does Not Contain Nuts	Does Not Contain Crustaceans	Does Not Contain Mustard
Does Not Contain Fish	Does Not Contain Lupin	Does Not Contain Sesame	Does Not Contain Celery	Does Not Contain Soya	Does Not Contain Molluscs	Does Not Contain Sulphur Dioxide

Dietary Information

Key: Suitable for

Suitable for Vegetarian	Suitable for Vegan	May not be suitable for Kosher	May not be suitable for Halal	NO DATA for Coeliac
-------------------------	--------------------	--------------------------------	-------------------------------	---------------------

Ingredients

Water, Wheat Flour (Fortified with Calcium Carbonate, Niacin, Iron, Thiamin), Sugar, Extra Virgin Rapeseed Oil, Sweetened Blueberries 8% (Blueberries, Sugar, Fructose-glucose syrup), Partially Inverted Refiners Syrup, Wheat Starch, Sugar Nibs, Flour Improver (Potato Starch, Tapioca Starch, Calcium Carbonate, Citric Acid, Guar Gum, Hydroxypropyl Methyl Cellulose, Psyllium Husk), Vanilla Flavouring <2%, Raising Agents (Gluten) (E 450i, E 500ii), wheat flour (contains calcium, iron, niacin, thiamine), Salt, Colouring (Concentrate of Carrot and Pumpkin)