

Supplier's Product Code :
Product Added :
Last Updated by Supplier :
erudus id :

070037
11 January 2024
11 January 2024
301511b05f0e43d9942ef4794a0a4393



The information on the **Erudus System** has been supplied by the manufacturers of the products and, whilst the owners of the Erudus System take steps to ensure the information is regularly updated, they give no warranty and no guarantee that the information is accurate. Product information and ingredients may change, please always read product labels carefully in addition to using the information provided by Erudus One.

We do not accept liability for any inaccuracies or incorrect information contained on this site. Please visit <http://www.erudus.com/terms-and-conditions> for full terms and conditions.

CHOCOLATE FRUIT & NUT SLICE (1 x 12 ptn)

Short Product Name:

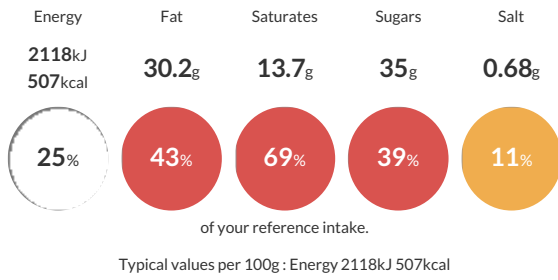
Chocolate Fruit & Nut Slice

Crushed digestive biscuits, sultanas, walnuts and cherries bound together in a chocolate fudge mixture, topped with plain chocolate and finished with a milk chocolate drizzle.

Traded Unit GTIN: **5060044070037** Internal GTIN: Supplier: **The Handmade Cake Co.** Suppliers Product Code: **070037**

Reference Intake

Each 100g portion contains:



Nutritional Information

Typical Values	Per 100g
Energy	2118kJ 507kCal
Carbohydrates	50.5g
of which sugars	35g
Fat	30.2g
of which saturates	13.7g
Fibre	4.1g
Protein	6.2g
Salt	0.68g

Allergy Information

Key: **Contains** **May Contain**



Dietary Information

Key: **Suitable for**



Ingredients

Digestive Biscuits [**WHEAT** Flour (with Calcium Carbonate, Iron, Niacin, Thiamin), Palm Oil, Sugar, Wholemeal **WHEAT** Flour, Partially Inverted Sugar Syrup, Raising Agents (E500, E503), Salt], Dark Chocolate (25%) [Cocoa Mass, Sugar, Cocoa Butter, Emulsifier (Lecithins (**SOYA**)), Natural Vanilla Flavouring], Sweetened Condensed Milk (Whole **MILK**, Sugar), Vegetable Margarine [Palm Oil, Rapeseed Oil, Water, Salt, Emulsifier (E471), Natural Flavouring], Sultanas (6%), **WALNUTS** (5%), Glacé Cherries (2.4%) [Cherries, Glucose-Fructose Syrup, Sugar, Acidity Regulator (Citric Acid), Colour (Anthocyanins)], Milk Chocolate (1.4%) [Sugar, Cocoa Butter, Whole **MILK** Powder, Cocoa Mass, Emulsifier (Lecithins (**SOYA**)), Natural Vanilla Flavouring].