

Supplier's Product Code :
Product Added :
Last Updated by Supplier :
erudus id :

BFL5275V
18 September 2019
28 April 2023
3113cdb6bd0f4541ab031bdd0de5a170



The information on the Erudus System has been supplied by the manufacturers of the products and, whilst the owners of the Erudus System take steps to ensure the information is regularly updated, they give no warranty and no guarantee that the information is accurate. Product information and ingredients may change, please always read product labels carefully in addition to using the information provided by Erudus One.

We do not accept liability for any inaccuracies or incorrect information contained on this site. Please visit <http://www.erudus.com/terms-and-conditions> for full terms and conditions.

Large Plain Naan 130g (1 x 24)

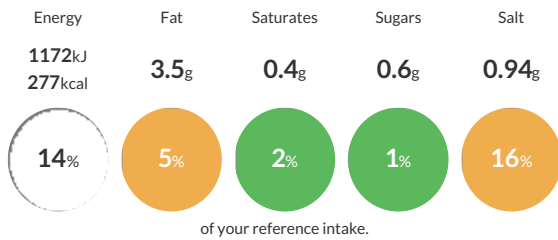
Short Product Name:

Fully baked teardrop shaped naan breads with kalonji seeds (1 x 24)

Traded Unit GTIN: 5022558000900 Internal GTIN: Supplier: Central Foods Group Ltd Suppliers Product Code: BFL5275V

Reference Intake

Each 100g portion contains:



Typical values per 100g : Energy 1172kJ 277kcal

Nutritional Information

Typical Values	Per 100g
Energy	1172kJ 277kCal
Carbohydrates	52.7g
of which sugars	0.6g
Fat	3.5g
of which saturates	0.4g
Fibre	2.3g
Protein	7.6g
Salt	0.94g

Allergy Information

Key: Contains May Contain



Allergen Statement

For allergens, including cereals containing gluten, see ingredients in CAPITALS

Ingredients

WHEAT Flour (Fortified with Calcium, Iron, Niacin, Thiamin), Water, Rapeseed Oil, Raising Agents (Monocalcium Phosphates, Sodium Bicarbonate), Yeast, Salt, Kalonji Seeds (0.5%), Dextrose.

Dietary Information

Key: Suitable for

