

Supplier's Product Code :
 Product Added :
 Last Updated by Supplier :
 erudus id :

5119633000
 12 November 2024
 12 November 2024
 31ad3f1007d44ba38bca3be1a7fa5197



The information on the **Erudus System** has been supplied by the manufacturers of the products and, whilst the owners of the Erudus System take steps to ensure the information is regularly updated, they give no warranty and no guarantee that the information is accurate. Product information and ingredients may change, please always read product labels carefully in addition to using the information provided by Erudus One.

We do not accept liability for any inaccuracies or incorrect information contained on this site. Please visit <http://www.erudus.com/terms-and-conditions> for full terms and conditions.

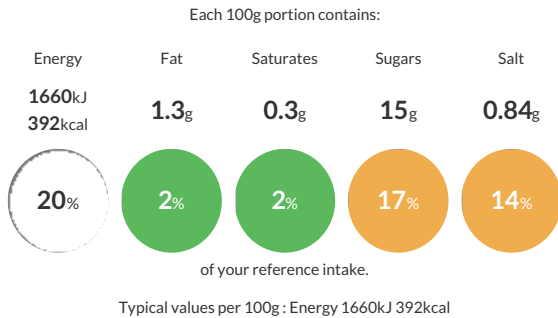
Kellogg's Special K Original Cereal 4x500g Bag Pack

Short Product Name:
 Special K Original Cereal

Start your morning with a tasty and nourishing bowl of Kellogg's Special K Original breakfast cereal. A deliciously crunchy combination of multigrain flakes of rice, wholewheat and barley. With a source of fibre, it's made with 38% wholegrain and, rest assured, there are no artificial colours or preservatives. Enjoy a delicious and satisfying breakfast to kickstart your day – unleash your potential and live life at full strength. Everything we're made of powers everything you're made of – #poweringyou. *A serving of Special K cereal contains $\geq 15\%$ RI vitamin B3 which contributes to normal energy-yielding metabolism. Enjoy as part of a balanced diet & healthy lifestyle.

Traded Unit GTIN: **5053827196345** Internal GTIN: Supplier: **Kellanova (Kellogg's)** Suppliers Product Code: **5119633000**

Reference Intake



Nutritional Information

Typical Values	Per 100g
Energy	1660kJ 392kCal
Carbohydrates	84g
of which sugars	15g
Fat	1.3g
of which saturates	0.3g
Fibre	6g
Protein	8g
Salt	0.84g

Allergy Information

Key: **Contains** **May Contain**

Contains Cereal/Gluten	May Contain Milk	Does Not Contain Eggs	Does Not Contain Peanuts	Does Not Contain Nuts	Does Not Contain Crustaceans	Does Not Contain Mustard
Does Not Contain Fish	Does Not Contain Lupin	Does Not Contain Sesame	Does Not Contain Celery	Does Not Contain Soya	Does Not Contain Molluscs	Does Not Contain Sulphur Dioxide

Dietary Information

Key: **Suitable for**

Suitable for Vegetarian	May not be suitable for Vegan	May not be suitable for Kosher	May not be suitable for Halal	NO DATA for Coeliac

Ingredients

Rice (47%), **WHOLEWHEAT** (37%), sugar, **BARLEY** (5%), malted **BARLEY** flour, salt, **BARLEY** malt extract, niacin, iron, zinc, riboflavin, thiamin, vitamin B6, folic acid, vitamin D, vitamin B12.