

Supplier's Product Code :
Product Added :
Last Updated by Supplier :
erudus id :

FB560
23 August 2024
23 August 2024
31fde816f040444a9cfb6c90c0802926



The information on the **Erudus System** has been supplied by the manufacturers of the products and, whilst the owners of the Erudus System take steps to ensure the information is regularly updated, they give no warranty and no guarantee that the information is accurate. Product information and ingredients may change, please always read product labels carefully in addition to using the information provided by Erudus One.

We do not accept liability for any inaccuracies or incorrect information contained on this site. Please visit <http://www.erudus.com/terms-and-conditions> for full terms and conditions.

BRIOCHE LOAF (RTA)

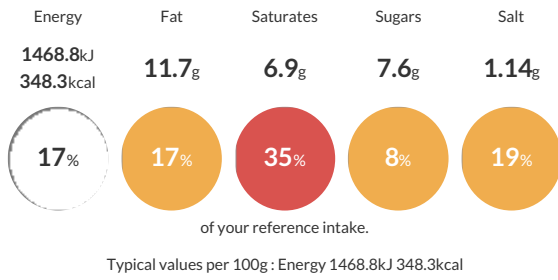
Short Product Name:
BRIOCHE LOAF

Frozen, fully-baked traditionally shaped sweet loaf.

Traded Unit GTIN: **5032633155609** Internal GTIN: Supplier: **Speciality Breads Ltd** Suppliers Product Code: **FB560**

Reference Intake

Each 100g portion contains:



Nutritional Information

Typical Values	Per 100g
Energy	1468.8kJ 348.3kCal
Carbohydrates	47.9g
of which sugars	7.6g
Fat	11.7g
of which saturates	6.9g
Fibre	2.1g
Protein	9.8g
Salt	1.14g

Allergy Information

Key: **Contains** **May Contain**



Dietary Information

Key: **Suitable for**



Ingredients

Wheat Flour (Fortified with Calcium Carbonate, Niacin, Iron, Thiamin), Water, Concentrated Butter (from milk), Sugar, Free Range Egg, Yeast, Salt, Skimmed Milk, Flour Treatment Agent: E 300