

Supplier's Product Code :
 Product Added :
 Last Updated by Supplier :
 erudus id :

C-HF3SPGB/12
 15 April 2024
 15 April 2024
 32103b683fbd481caad6ef54dbb72fa5



The information on the Erudus System has been supplied by the manufacturers of the products and, whilst the owners of the Erudus System take steps to ensure the information is regularly updated, they give no warranty and no guarantee that the information is accurate. Product information and ingredients may change, please always read product labels carefully in addition to using the information provided by Erudus One.

We do not accept liability for any inaccuracies or incorrect information contained on this site. Please visit <http://www.erudus.com/terms-and-conditions> for full terms and conditions.

Heartsease Farm Fiery Ginger Beer Sparkling premium presse cans 330ml

Short Product Name:

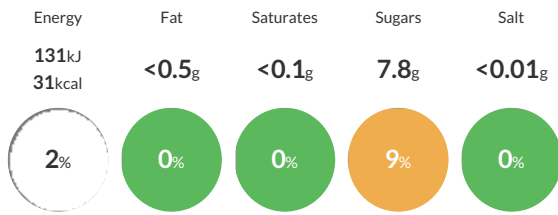
Heartsease Farm Sparkling Ginger Beer

The warmth of ginger meets the zing of sun-kissed Sicilian lemons in this fiery ginger beer. Made with 100% natural ingredients and Radnorshire spring water, it blends perfectly with spiced rum and lime for a charismatic cocktail or perfect just over ice. Heartsease Farm tastes beautiful just poured over ice in a tall glass or as a mixer with your favourite spirit. You could always try our 'Muddy Boots,' serve Spiced rum and our Fiery Ginger Beer over ice with a wedge of lime. Heartsease Farm is a working farm and we believe it's our duty to protect the environment we live, work and farm in and that's why we are proud to be a zero to landfill bottling site.

Traded Unit GTIN: 05026109009985 Internal GTIN: 5026109009978 Supplier: Radnor Hills Mineral Water Company Ltd Suppliers Product Code: C-HF3SPGB/12

Reference Intake

Each 100ml portion contains:



of your reference intake.

Typical values per 100ml: Energy 131kJ 31kcal

Nutritional Information

Typical Values	Per 100ml
Energy	131kJ 31kCal
Carbohydrates	7.8g
of which sugars	7.8g
Fat	<0.5g
of which saturates	<0.1g
Fibre	-g
Protein	<0.5g
Salt	<0.01g

Allergy Information

Key: Contains May Contain



Allergen Statement

N/A

Ingredients

Carbonated spring water, Sicilian Lemon juice from concentrate (10%), Sugar, Lemon Comminute from Concentrate, Flavoursing.

Dietary Information

Key: Suitable for

