

Supplier's Product Code : 619253
 Product Added : 25 July 2024
 Last Updated by Supplier : 25 July 2024
 erudus id : 33094fa07ade40cbbdcd7baa067c283b



The information on the Erudus System has been supplied by the manufacturers of the products and, whilst the owners of the Erudus System take steps to ensure the information is regularly updated, they give no warranty and no guarantee that the information is accurate. Product information and ingredients may change, please always read product labels carefully in addition to using the information provided by Erudus One.

We do not accept liability for any inaccuracies or incorrect information contained on this site. Please visit <http://www.erudus.com/terms-and-conditions> for full terms and conditions.

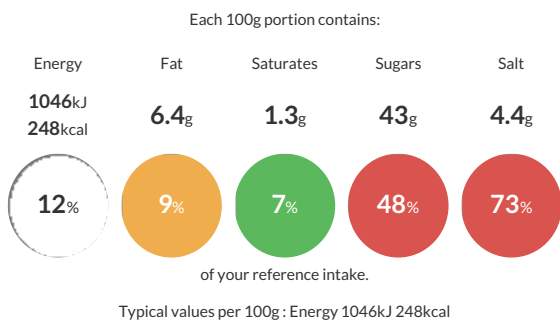
LEE KUM KEE PEKING STYLE SAUCE 2X2.49KG

Short Product Name:
 PEKING STYLE SAUCE

2.49Kg Lee Kum Kee Ready to Use Peking Style Sauce The Professional Range

Traded Unit GTIN: 60078895133280 Internal GTIN: 0078895133288 Supplier: Petty Wood & Co Suppliers Product Code: 619253

Reference Intake



Nutritional Information

Typical Values	Per 100g
Energy	1046kJ 248kCal
Carbohydrates	43g
of which sugars	43g
Fat	6.4g
of which saturates	1.3g
Fibre	0g
Protein	2.6g
Salt	4.4g

Allergy Information

Key: Contains May Contain

Contains Cereal/Gluten	Does Not Contain Milk	Does Not Contain Eggs	Does Not Contain Peanuts	Does Not Contain Nuts	Does Not Contain Crustaceans	Does Not Contain Mustard
Does Not Contain Fish	Does Not Contain Lupin	Contains Sesame	Does Not Contain Celery	Contains Soya	Does Not Contain Molluscs	Does Not Contain Sulphur Dioxide

Dietary Information

Key: Suitable for

Suitable for Vegetarian	Suitable for Vegan	May not be suitable for Kosher	May not be suitable for Halal	NO DATA for Coeliac
-------------------------	--------------------	--------------------------------	-------------------------------	---------------------

Allergen Statement

PLEASE SEE INGREDIENTS IN BOLD/CAPITALS

Ingredients

Sugar, Fermented Soybean Paste 25% (water, salt, **SOYBEANS, WHEAT** flour), Water, Tomato Paste, Salted Plum 6%, **SESAME** Paste 4%, **SOYBEAN** Oil, Colour E150a, Modified Corn Starch, Spices, Stabilizer E415 (**SOYBEANS, WHEAT**), Flavour Enhancers (E631, E627).