

Supplier's Product Code :  
Product Added :  
Last Updated by Supplier :  
erudus id :

886F  
21 June 2023  
03 July 2023  
33bf4e6412534515b5ff251bf51ba69c



The information on the **Erudus System** has been supplied by the manufacturers of the products and, whilst the owners of the Erudus System take steps to ensure the information is regularly updated, they give no warranty and no guarantee that the information is accurate. Product information and ingredients may change, please always read product labels carefully in addition to using the information provided by Erudus One.

We do not accept liability for any inaccuracies or incorrect information contained on this site. Please visit <http://www.erudus.com/terms-and-conditions> for full terms and conditions.

## Poppy and Linseed Topped Beetroot Burger Bun 32x2

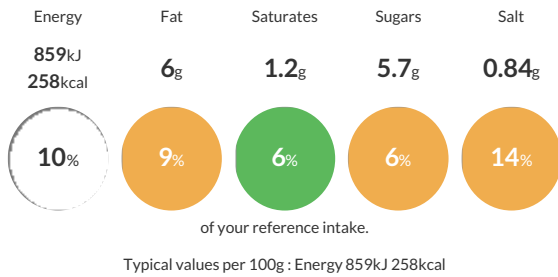
Short Product Name:  
Burger bun

Beetroot Burger bun topped with Poppy and Linseed.

Traded Unit GTIN:  Internal GTIN: Supplier: **The Sourdough Company Ltd** Suppliers Product Code: **886F**

### Reference Intake

Each 100g portion contains:



### Nutritional Information

Typical Values	Per 100g
Energy	859kJ 258kCal
Carbohydrates	40.7g
of which sugars	5.7g
Fat	6g
of which saturates	1.2g
Fibre	3g
Protein	7.4g
Salt	0.84g

### Allergy Information

Key: **Contains** **May Contain**



#### Allergen Statement

This product contains **WHEAT FLOUR, WHEAT GLUTEN**. May contain **RYE** and **BARLEY**.

### Ingredients

White **WHEAT** Flour, (**WHEAT** Flour, Calcium Carbonate, Iron, Niacin, Thiamin, Wheat Gluten), Water, Linseeds, Poppy Seeds, Margarine, (Palm Oil, Rapeseed Oil, Water, Natural Colours, Flavouring, Emulsifier, Polyglycerol Esters of Fatty Acids), Sugar, Beetroot Powder, Rapeseed Oil, Yeast, Salt, Bread Improver, (Wheat Flour, Flour Treatment Agent, Ascorbic Acid), Glaze mix, (Water, Glaze (Pea Protein, Dextrose)).

### Dietary Information

Key: **Suitable for**

