

Supplier's Product Code :  
Product Added :  
Last Updated by Supplier :  
erudus id :

460404  
14 March 2024  
14 March 2024  
33c93c72d5264d34b96b9f06f1e1d7ee



The information on the Erudus System has been supplied by the manufacturers of the products and, whilst the owners of the Erudus System take steps to ensure the information is regularly updated, they give no warranty and no guarantee that the information is accurate. Product information and ingredients may change, please always read product labels carefully in addition to using the information provided by Erudus One.

We do not accept liability for any inaccuracies or incorrect information contained on this site. Please visit <http://www.erudus.com/terms-and-conditions> for full terms and conditions.

## LYLES MAPLE SYRUP 4X2.80KG

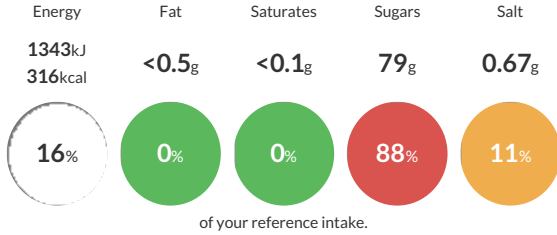
Short Product Name:  
MAPLE SYRUP

Maple natural flavouring blended with golden syrup – a partially inverted refiners syrup originating from a cane sugar syrup solution. It is a pale golden amber viscous syrup. It can be used in any recipe where maple syrup is required. Use in baking to add flavour and sweetness to cakes and biscuits or use as a pouring sauce for pancakes and waffles.

Traded Unit GTIN: 05010115102457 Internal GTIN: 5010115825899 Supplier: Tate & Lyle Sugars Suppliers Product Code: 460404

### Reference Intake

Each 100g portion contains:



Typical values per 100g : Energy 1343kJ 316kcal

### Nutritional Information

Typical Values	Per 100g
Energy	1343kJ 316kCal
Carbohydrates	79g
of which sugars	79g
Fat	<0.5g
of which saturates	<0.1g
Fibre	-g
Protein	0.1g
Salt	0.67g

### Allergy Information

Key: Contains May Contain



#### Allergen Statement

Allergen Status: This product is Allergen free as defined by European Regulation (EU) 1169/2011 and European Commission Regulation (EC) 41/2009 (Gluten ≤ 20ppm).

### Ingredients

Partially inverted refiners syrup, Natural flavouring.

### Dietary Information

Key: Suitable for

