

Supplier's Product Code :
Product Added :
Last Updated by Supplier :
erudus id :

013320P
25 November 2024
25 November 2024
33cf7077186742188e4c6d618fe35a86



The information on the Erudus System has been supplied by the manufacturers of the products and, whilst the owners of the Erudus System take steps to ensure the information is regularly updated, they give no warranty and no guarantee that the information is accurate. Product information and ingredients may change, please always read product labels carefully in addition to using the information provided by Erudus One.

We do not accept liability for any inaccuracies or incorrect information contained on this site. Please visit <http://www.erudus.com/terms-and-conditions> for full terms and conditions.

Purple Pineapple Tuna Mayonnaise and Sweetcorn 2.5kg

Short Product Name:

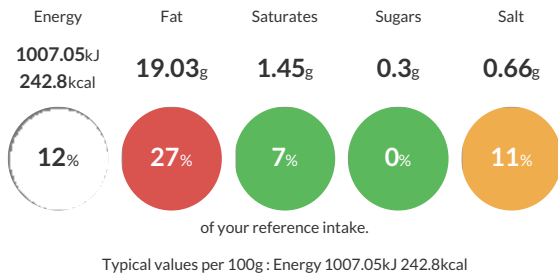
Tuna Mayonnaise and Sweetcorn

Tuna chunks & sweetcorn bound in a free range real mayonnaise

Traded Unit GTIN: Internal GTIN: Supplier: Suppliers Product Code:

Reference Intake

Each 100g portion contains:



Nutritional Information

Typical Values	Per 100g
Energy	1007.05kJ 242.8kCal
Carbohydrates	3.39g
of which sugars	0.3g
Fat	19.03g
of which saturates	1.45g
Fibre	0.71g
Protein	14.26g
Salt	0.66g

Allergy Information

Key: Contains May Contain



Dietary Information

Key: Suitable for



Ingredients

Tuna 55% (Tuna, water, salt,) (FISH); Free Range Real Mayonnaise 30% (Rapeseed Oil, Water, Sugar, Modified Maize Starch, Preservative: Acetic Acid, Free Range EGG Yolk Powder, Stabiliser: Xanthan Gum . Salt, Preservative: Potassium Sorbate, Colour (Lutein) (EGGS)); Sweetcorn 15% (Sweetcorn, water, salt, citric acid).