

The information on the [Erudus System](#) has been supplied by the manufacturers of the products and, whilst the owners of the Erudus System take steps to ensure the information is regularly updated, they give no warranty and no guarantee that the information is accurate. Product information and ingredients may change, please always read product labels carefully in addition to using the information provided by Erudus One.

We do not accept liability for any inaccuracies or incorrect information contained on this site. Please visit <http://www.erudus.com/terms-and-conditions> for full terms and conditions.

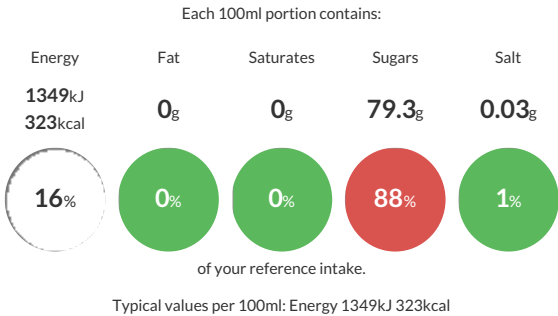
6x1ltrl Monin Caramel Syrup

Short Product Name:
Caramel Syrup

Caramel syrup

Traded Unit GTIN: 13052911616003 Internal GTIN: 3052910052799 Supplier : Bennett Ople Limited Suppliers Product Code : H1517

Reference Intake



Nutritional Information

Typical Values	Per 100ml
Energy	1349kJ 323kCal
Carbohydrates	79.3g
of which sugars	79.3g
Fat	0g
of which saturates	0g
Fibre	-g
Protein	0g
Salt	0.03g

Allergy Information

Key: Contains May Contain


Does Not Contain Cereal/Gluten


Does Not Contain Milk


Does Not Contain Eggs


Does Not Contain Peanuts


Does Not Contain Nuts


Does Not Contain Crustaceans


Does Not Contain Mustard


Does Not Contain Fish


Does Not Contain Lupin


Does Not Contain Sesame


Does Not Contain Celery


Does Not Contain Soya


Does Not Contain Molluscs


Does Not Contain Sulphur Dioxide

Dietary Information

Key: Suitable for


Suitable for Vegetarian


Suitable for Vegan


May not be suitable for Kosher


May not be suitable for Halal


NO DATA for Coeliac

Ingredients

Sugar, water, natural flavouring, acid (citric acid), colour (E150)a.