

Supplier's Product Code :
Product Added :
Last Updated by Supplier :
erudus id :

F31670
22 April 2024
22 April 2024
34fd4dbdae6b43698338301aac3e8f25



The information on the **Erudus System** has been supplied by the manufacturers of the products and, whilst the owners of the Erudus System take steps to ensure the information is regularly updated, they give no warranty and no guarantee that the information is accurate. Product information and ingredients may change, please always read product labels carefully in addition to using the information provided by Erudus One.

We do not accept liability for any inaccuracies or incorrect information contained on this site. Please visit <http://www.erudus.com/terms-and-conditions> for full terms and conditions.

White Chocolate & Raspberry Cheesecake 12 Portions

Short Product Name:

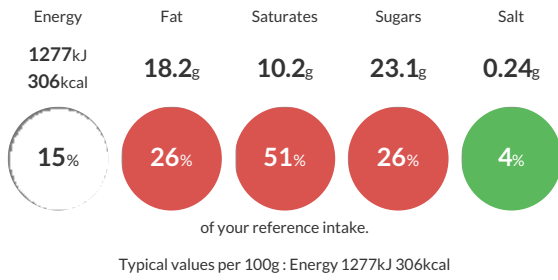
White Chocolate & Raspberry Cheesecake

A digestive biscuit crumb base, topped with a white chocolate flavoured full fat cream cheese cheesecake containing raspberries. Baked and topped with a raspberry fruit topping. Pre-portioned into 12 slices.

Traded Unit GTIN: **05036982303971** Internal GTIN: Supplier: **Mademoiselle Desserts (Taunton)** Suppliers Product Code: **F31670**

Reference Intake

Each 100g portion contains:



Nutritional Information

Typical Values	Per 100g
Energy	1277kJ 306kCal
Carbohydrates	31.71g
of which sugars	23.1g
Fat	18.2g
of which saturates	10.2g
Fibre	1.1g
Protein	3.5g
Salt	0.24g

Allergy Information

Key: **Contains** **May Contain**



Dietary Information

Key: **Suitable for**



Ingredients

Full Fat Soft Cheese (29%) (Cream **MILK**), Water, Skimmed **MILK** Powder, Cornflour, **BUTTERMILK** Powder, Salt), Raspberry Compote (18%) (Water, Sugar, Raspberry, Modified Maize Starch, Plum Juice From Concentrate, Raspberry Juice From Concentrate, Gelling Agent (Pectin), Acidity Regulators (Citric Acid, Sodium Citrates), Colour (Anthocyanins), Natural Flavouring), Digestive Biscuit (13%) (**WHEAT** Flour (**WHEAT** Flour, Calcium Carbonate, Iron, Nicotinamide, Thiamin), Vegetable Oils (Palm, Rapeseed), Sugar, Wholemeal **WHEAT** Flour, Invert Sugar Syrup, Raising Agent (Ammonium Carbonates)), Cream (**MILK**), Sugar, White Chocolate (6.8%) (Sugar, Whole **MILK** Powder, Cocoa Butter, Skimmed **MILK** Powder, Emulsifier (**SOYA** Lecithin), Natural Flavouring), Raspberries (6%), **EGG**, Margarine (Palm Oil, Rapeseed Oil, Water, Emulsifier (Mono- and Diglycerides of Fatty Acids)), Modified Maize Starch, Natural Flavouring, Stabilisers (Xanthan Gum, Locust Bean Gum, Guar Gum).