

The information on the **Erudus System** has been supplied by the manufacturers of the products and, whilst the owners of the Erudus System take steps to ensure the information is regularly updated, they give no warranty and no guarantee that the information is accurate. Product information and ingredients may change, please always read product labels carefully in addition to using the information provided by Erudus One.

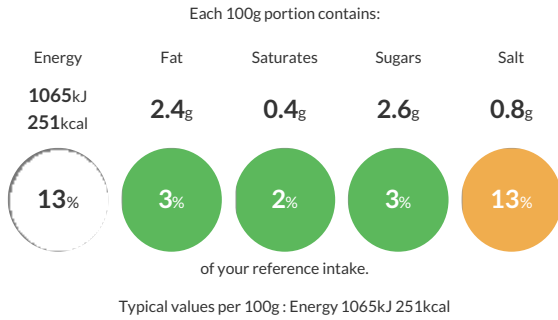
We do not accept liability for any inaccuracies or incorrect information contained on this site. Please visit <http://www.erudus.com/terms-and-conditions> for full terms and conditions.

## Kara Part Baked Panini Baguette

A part baked white Panini. Great for making delicious toasted Panini sandwiches.

Traded Unit GTIN: **05010066107532** Internal GTIN: Supplier: **Kara Foodservice (Fletchers)** Suppliers Product Code: **F00753**

### Reference Intake



### Nutritional Information

Typical Values	Per 100g
Energy	1065kJ 251kCal
Carbohydrates	48.3g
of which sugars	2.6g
Fat	2.4g
of which saturates	0.4g
Fibre	2g
Protein	9.1g
Salt	0.8g

### Allergy Information

Key: **Contains** **May Contain**

Contains Cereal/Gluten	Does Not Contain Milk	Does Not Contain Eggs	Does Not Contain Peanuts	Does Not Contain Nuts	Does Not Contain Crustaceans	Does Not Contain Mustard
Does Not Contain Fish	Does Not Contain Lupin	May Contain Sesame	Does Not Contain Celery	Does Not Contain Soya	Does Not Contain Molluscs	Does Not Contain Sulphur Dioxide

### Dietary Information

Key: **Suitable for**

Suitable for Vegetarian	Suitable for Vegan	May not be suitable for Kosher	May not be suitable for Halal	May not be suitable for Coeliac

### Allergen Statement

For allergens (including cereals containing gluten), see ingredients in bold. Also, may contain sesame.

### Ingredients

Wheat Flour, (**WHEAT** Flour, Calcium Carbonate, Iron, Niacin, Thiamin), Water, Olive Oil, Salt, Yeast, Emulsifier (Mono- and Di- Acetyl Tartric Esters of Mono- and Di- Glycerides of Fatty Acids), Flour Treatment Agent (Ascorbic Acid).