

Supplier's Product Code :
Product Added :
Last Updated by Supplier :
erudus id :

YOMU70024
04 March 2020
13 January 2023
3777671f11a6498f99cc5759aa9f1fb6



The information on the [Erudus System](#) has been supplied by the manufacturers of the products and, whilst the owners of the Erudus System take steps to ensure the information is regularly updated, they give no warranty and no guarantee that the information is accurate. Product information and ingredients may change, please always read product labels carefully in addition to using the information provided by Erudus One.

We do not accept liability for any inaccuracies or incorrect information contained on this site. Please visit <http://www.erudus.com/terms-and-conditions> for full terms and conditions.

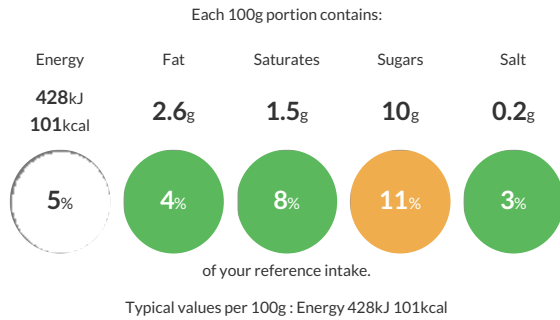
MULLER RICE MIXED CASE 12X1X180 70024 - Creamy dairy rice

Short Product Name:

Muller Rice Mixed case

Traded Unit GTIN: Internal GTIN: Supplier: **Central Supplies** Suppliers Product Code: **YOMU70024**

Reference Intake



Nutritional Information

Typical Values	Per 100g
Energy	428kJ 101kCal
Carbohydrates	16.1g
of which sugars	10g
Fat	2.6g
of which saturates	1.5g
Fibre	-g
Protein	3.4g
Salt	0.2g

Allergy Information

Key: **Contains** **May Contain**



Gluten Claim

Gluten content is less than 20ppm.

Dietary Information

Key: **Suitable for**



Ingredients

Skimmed **MILK**, Skimmed **MILK** from Concentrate, Rice (8%), Cream (**MILK**)(6%), Sugar, **EGG**, Dextrose, Stabilisers: Carob Bean Gum, Guar Gum; Salt, Flavourings.

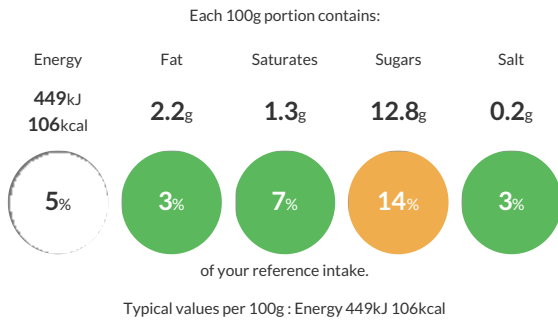
MULLER RICE MIXED CASE 12X1X180 70024 - Creamy dairy rice with strawberry

Short Product Name:

Muller Rice Mixed case

Traded Unit GTIN: - Internal GTIN: Supplier: **CentralSupplies** Suppliers Product Code: **YOMU70024**

Reference Intake



Nutritional Information

Typical Values	Per 100g
Energy	449kJ 106kCal
Carbohydrates	18.6g
of which sugars	12.8g
Fat	2.2g
of which saturates	1.3g
Fibre	-g
Protein	3g
Salt	0.2g

Allergy Information

Key: **Contains** **May Contain**

 Does Not Contain Cereal/Gluten	 Contains Milk	 Contains Eggs	 Does Not Contain Peanuts	 Does Not Contain Nuts	 Does Not Contain Crustaceans	 Does Not Contain Mustard
 Does Not Contain Fish	 Does Not Contain Lupin	 Does Not Contain Sesame	 Does Not Contain Celery	 Does Not Contain Soya	 Does Not Contain Molluscs	 Does Not Contain Sulphur Dioxide

Dietary Information

Key: **Suitable for**

 May not be suitable for Vegetarian	 May not be suitable for Vegan	 May not be suitable for Kosher	 May not be suitable for Halal	 Suitable for Coeliac
-------------------------------------------------------------------------------------------------------------------------	--------------------------------------------------------------------------------------------------------------------	-----------------------------------------------------------------------------------------------------------------------	----------------------------------------------------------------------------------------------------------------------	-------------------------------------------------------------------------------------------------------------

Gluten Claim

Gluten content is less than 20ppm.

Ingredients

Skimmed MILK, Skimmed MILK from Concentrate, Sugar, Rice (7%), Water, Cream (MILK) (5%), Strawberries (5%), EGG, Dextrose, Modified Maize Starch, Stabilisers: Carob Bean Gum, Guar Gum, Salt, Beetroot Juice Concentrate, Flavourings, Acidity Regulators: Citric Acid, Sodium Citrates. Colour: Carmines.

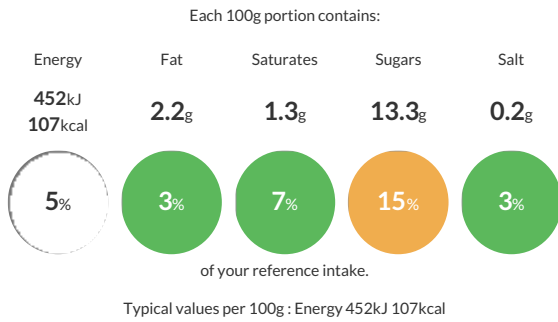
MULLER RICE MIXED CASE 12X1X180 70024 - Creamy dairy rice with apple

Short Product Name:

Muller Rice Mixed case

Traded Unit GTIN: - Internal GTIN: Supplier: **CentralSupplies** Suppliers Product Code: **YOMU70024**

Reference Intake



Nutritional Information

Typical Values	Per 100g
Energy	452kJ 107kCal
Carbohydrates	18.8g
of which sugars	13.3g
Fat	2.2g
of which saturates	1.3g
Fibre	-g
Protein	3g
Salt	0.2g

Allergy Information

Key: **Contains** **May Contain**

 Does Not Contain Cereal/Gluten	 Contains Milk	 Contains Eggs	 Does Not Contain Peanuts	 Does Not Contain Nuts	 Does Not Contain Crustaceans	 Does Not Contain Mustard
 Does Not Contain Fish	 Does Not Contain Lupin	 Does Not Contain Sesame	 Does Not Contain Celery	 Does Not Contain Soya	 Does Not Contain Molluscs	 Does Not Contain Sulphur Dioxide

Gluten Claim

Gluten content is less than 20ppm.

Ingredients

Skimmed MILK, Skimmed MILK from Concentrate, Sugar, Rice (7%), Cream (MILK) (5%), Apples (5%), Apple Juice from Concentrate (3%), EGG, Modified Maize Starch, Stabilisers: Carob Bean Gum, Guar Gum, Salt, Dextrose, Acidity Regulators: Ascorbic Acid, Sodium Citrates, Citric Acid. Flavourings

Dietary Information

Key: **Suitable for**

 Suitable for Vegetarian	 May not be suitable for Vegan	 May not be suitable for Kosher	 May not be suitable for Halal	 Suitable for Coeliac
--------------------------------------------------------------------------------------------------------------	--------------------------------------------------------------------------------------------------------------------	-----------------------------------------------------------------------------------------------------------------------	----------------------------------------------------------------------------------------------------------------------	-------------------------------------------------------------------------------------------------------------