

Supplier's Product Code :
Product Added :
Last Updated by Supplier :
erudus id :

12351298
01 March 2018
13 October 2021
381b71bfa8c64a22a57e39c61c0e4f15



The information on the **Erudus System** has been supplied by the manufacturers of the products and, whilst the owners of the Erudus System take steps to ensure the information is regularly updated, they give no warranty and no guarantee that the information is accurate. Product information and ingredients may change, please always read product labels carefully in addition to using the information provided by Erudus One.

We do not accept liability for any inaccuracies or incorrect information contained on this site. Please visit <http://www.erudus.com/terms-and-conditions> for full terms and conditions.

TOFFEE CRISP 24x38g XB

Short Product Name:

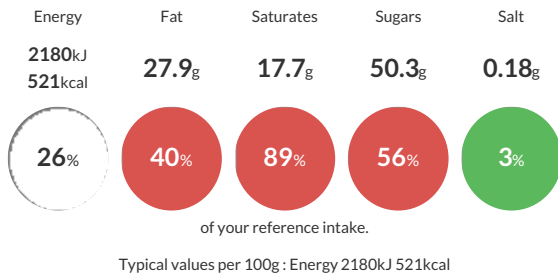
Toffee Crisp Milk Chocolate Bar 38g

Toffee (18%) and crisped cereal (11%) filled milk chocolate

Traded Unit GTIN: **07613036249874** Internal GTIN: **7613034959287** Supplier: **Nestle UK** Suppliers Product Code: **12351298**

Reference Intake

Each 100g portion contains:



Nutritional Information

Typical Values	Per 100g
Energy	2180kJ 521kCal
Carbohydrates	63g
of which sugars	50.3g
Fat	27.9g
of which saturates	17.7g
Fibre	1.2g
Protein	3.7g
Salt	0.18g

Allergy Information

Key: **Contains** **May Contain**



Dietary Information

Key: **Suitable for**



Allergen Statement

Contains: **MILK** and **GLUTEN** from **WHEAT** and **BARLEY**

Ingredients

Sugar, Vegetable fats (Sunflower, Palm, Palm kernel, Coconut, Shea/ Illipe/ Mango kernel/ Kokum Gurgi/ Sal), Glucose syrup, Rice flour, **LACTOSE** and proteins from whey (from **MILK**), Whey powder (from **MILK**) Sweetened condensed skimmed **MILK**, Dried whole **MILK**, Cocoa butter, Cocoa mass, Invert sugar syrup, Fat-reduced cocoa powder, Salt, Emulsifiers (Sunflower lecithin, E471), **BARLEY** malt extract, Natural flavouring, **WHEAT** flour (contains Calcium, Iron, Thiamin and Niacin), Vitamins (B3, B5, D, B6, B2, Folic acid, B1, B12), Iron, Malted **WHEAT** flour, Raising agents (Sodium bicarbonate, Calcium carbonate).