

Supplier's Product Code :
Product Added :
Last Updated by Supplier :
erudus id :

MSQW020
07 July 2022
05 April 2024
3b8d4791292e40b385fdde6b00f4046f



The information on the **Erudus System** has been supplied by the manufacturers of the products and, whilst the owners of the Erudus System take steps to ensure the information is regularly updated, they give no warranty and no guarantee that the information is accurate. Product information and ingredients may change, please always read product labels carefully in addition to using the information provided by Erudus One.

We do not accept liability for any inaccuracies or incorrect information contained on this site. Please visit <http://www.erudus.com/terms-and-conditions> for full terms and conditions.

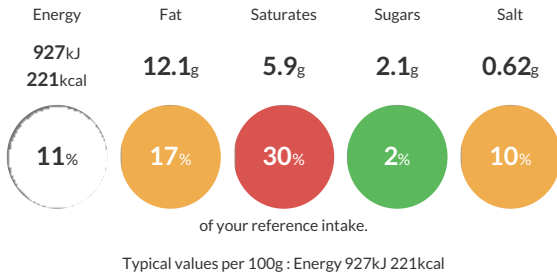
Quiche Lorraine 11" (1 x 1)

11" diameter, whole quiche made with egg, bacon and mature Cheddar cheese encased in shortcrust pastry. Approx. 12 ptns per quiche/100g per ptn. Serve hot or thaw and serve cold. Made with palm from a sustainable source, RSPO certificate number: BMT-RSPO-000578. (1 x 1)

Traded Unit GTIN: **05060062473766** Internal GTIN: Supplier: **Central Foods Group Ltd** Suppliers Product Code: **MSQW020**

Reference Intake

Each 100g portion contains:



Nutritional Information

Typical Values	Per 100g
Energy	927kJ 221kCal
Carbohydrates	21.7g
of which sugars	2.1g
Fat	12.1g
of which saturates	5.9g
Fibre	0.8g
Protein	7g
Salt	0.62g

Allergy Information

Key: **Contains** **May Contain**



Allergen Statement

For allergens, including cereals containing gluten, see ingredients in **CAPITALS**.

Ingredients

Pastry Case: Fortified **WHEAT** Flour (with Calcium, Iron, Niacin, Thiamine), Margarine (Palm Oil, Coconut Oil, Rapeseed Oil, Water; Salt, Emulsifier (Mono- and Diglycerides of Fatty Acids), Acidity Regulators (Citric Acid, Disodium Citrate), Natural Flavouring, Colour (Natural Carotenes)), Shortening (Palm Oil, Rapeseed Oil), Maize Flour, Water, Tomato Puree, Sea Salt .
Filling: Water, Whole Liquid **EGG** (13%) Bacon (7%) (Pork, Salt, Demerara Sugar, Sodium Nitrite) Mature White Cheddar Cheese (5%) (**MILK**, Salt, Starter, Rennet, Potato Starch), Whole **MILK** Powder, Cornflour, Modified Maize Starch, Onion, **MUSTARD** Powder, Ground White Pepper.

Dietary Information

Key: **Suitable for**

