

Supplier's Product Code :
Product Added :
Last Updated by Supplier :
erudus id :

013324P
05 November 2024
06 November 2024
3c107c3660334aa88b6df0ae0ec0e836



The information on the [Erudus System](#) has been supplied by the manufacturers of the products and, whilst the owners of the Erudus System take steps to ensure the information is regularly updated, they give no warranty and no guarantee that the information is accurate. Product information and ingredients may change, please always read product labels carefully in addition to using the information provided by Erudus One.

We do not accept liability for any inaccuracies or incorrect information contained on this site. Please visit <http://www.erudus.com/terms-and-conditions> for full terms and conditions.

Purple Pineapple Chicken Mayonnaise and Sweetcorn 2.5kg

Short Product Name:

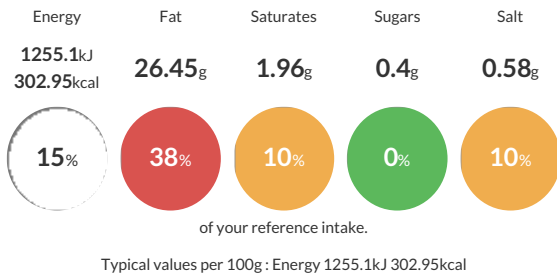
Chicken Mayonnaise and Sweetcorn

Diced chicken breast blended with free range real mayonnaise and sweetcorn

Traded Unit GTIN: Internal GTIN: Supplier: Suppliers Product Code:

Reference Intake

Each 100g portion contains:



Nutritional Information

Typical Values	Per 100g
Energy	1255.1kJ 302.95kCal
Carbohydrates	2.55g
of which sugars	0.4g
Fat	26.45g
of which saturates	1.96g
Fibre	1.02g
Protein	13.06g
Salt	0.58g

Allergy Information

Key: Contains May Contain



Dietary Information

Key: Suitable for



Ingredients

Cooked Chicken 45% (Chicken, Salt) Free Range Real Mayonnaise 40% (Rapeseed Oil, Water, Sugar, Modified Maize Starch, Free Range EGG Yolk Powder, Stabiliser (Xanthan Gum), Salt, Preservatives (Acetic Acid, Potassium Sorbate), Colour (Lutein); Sweetcorn 15% (Sweetcorn, Water, Sugar, Salt, Citric Acid).