

Supplier's Product Code :
 Product Added :
 Last Updated by Supplier :
 erudus id :

000207
 30 September 2024
 30 September 2024
 3e6c11ad226f4c5c9fccc054dc76bf21



The information on the **Erudus System** has been supplied by the manufacturers of the products and, whilst the owners of the Erudus System take steps to ensure the information is regularly updated, they give no warranty and no guarantee that the information is accurate. Product information and ingredients may change, please always read product labels carefully in addition to using the information provided by Erudus One.

We do not accept liability for any inaccuracies or incorrect information contained on this site. Please visit <http://www.erudus.com/terms-and-conditions> for full terms and conditions.

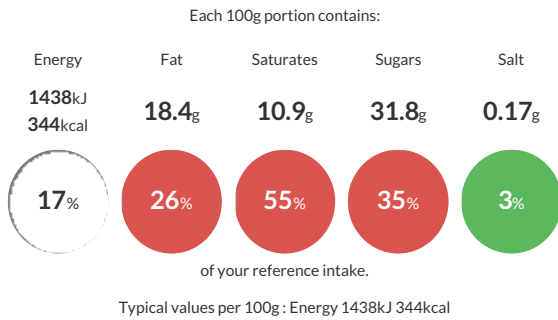
Opera

Short Product Name:
 Opera, frozen

Dessert based on a biscuit soaked in coffee syrup, coffee buttercream, chocolate ganache and cocoa icing - Frozen

Traded Unit GTIN: **03700478531439** Internal GTIN: **03700478531439** Supplier: **Traiteur De Paris** Suppliers Product Code: **000207**

Reference Intake



Nutritional Information

Typical Values	Per 100g
Energy	1438kJ 344kCal
Carbohydrates	39.1g
of which sugars	31.8g
Fat	18.4g
of which saturates	10.9g
Fibre	2.2g
Protein	4.4g
Salt	0.17g

Allergy Information

Key: **Contains** **May Contain**



Allergen Statement

CONTAINS eggs and egg products, cereals containing gluten, milk and dairy products, nuts (almonds), soy and soy-based products. May contain traces of sesame, shellfish, molluscs, fish, celery, mustard, sulphite, lupine, peanuts and other nuts.

Ingredients

Ingredients: biscuits 23.4% (whole **EGG**, sugar, **WHEAT** flour (**GLUTEN**), water, **ALMOND** powder, pea flour, baking powder: diphosphates - sodium carbonates (contains **WHEAT** starch (**GLUTEN**)), emulsifier: mono- and diglycerides of fatty acids, potato starch, **MILK** proteins), water, sugar, butter (**MILK**), topping (water, glucose syrup, sugar, gelling agent: pectin, acidifier: citric acid), cream (**DAIRY** cream (**MILK**), stabiliser: carrageenans), dark chocolate coating 7.3% [59% cocoa] (cocoa paste, sugar, cocoa butter, emulsifier: **SOYA** lecithin), **EGG** whites, dark chocolate coating 3% [72% cocoa] (cocoa paste, sugar, cocoa butter, emulsifier: **SOYA** lecithin, natural vanilla flavouring), coffee extract 1.5% (coffee, water, sugar), coffee 1.4%, glucose syrup, cacao powder, beef gelatin, gelling agent: pectins (stabilisers: diphosphates, calcium phosphate).

Dietary Information

Key: **Suitable for**

