

Supplier's Product Code :
Product Added :
Last Updated by Supplier :
erudus id :

F071577
16 October 2024
16 October 2024
41838d138e0944498034223d3987bc39



The information on the Erudus System has been supplied by the manufacturers of the products and, whilst the owners of the Erudus System take steps to ensure the information is regularly updated, they give no warranty and no guarantee that the information is accurate. Product information and ingredients may change, please always read product labels carefully in addition to using the information provided by Erudus One.

We do not accept liability for any inaccuracies or incorrect information contained on this site. Please visit <http://www.erudus.com/terms-and-conditions> for full terms and conditions.

STICKY TOFFEE PECAN LOAF 2 x 11 ptn

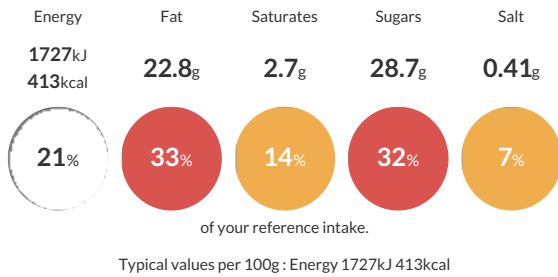
Short Product Name:
STICKY TOFFEE PECAN LOAF

A sticky, toffee flavour date loaf with pecan pieces, sandwiched with a toffee flavour icing. Topped with pecan pieces and finished with apricot jam.

Traded Unit GTIN: 5060044071577 Internal GTIN: Supplier: The Handmade Cake Co. Suppliers Product Code: F071577

Reference Intake

Each 100g portion contains:



Nutritional Information

Typical Values	Per 100g
Energy	1727kJ 413kCal
Carbohydrates	45.8g
of which sugars	28.7g
Fat	22.8g
of which saturates	2.7g
Fibre	3.5g
Protein	4.6g
Salt	0.41g

Allergy Information

Key: Contains May Contain



Dietary Information

Key: Suitable for



Ingredients

WHEAT Flour (with Calcium Carbonate, Niacin, Iron, Thiamin), Date Paste (16%) [Water, Dates, Rice Flour], Dark Brown Sugar [Sugar, Cane Molasses], Rapeseed Oil, Pasteurised Free Range EGG, Sugar, PECAN NUTS (5%), Chicory Root Fibre, Vegetable Margarine [Palm Oil, Rapeseed Oil, Water, Salt, Emulsifier (E471), Natural Flavouring], Full Fat Soft Cheese [Full Fat Soft Cheese (MILK), Thickener (Guar Gum)], Caramelised Sugar Syrup, Apricot Jam (0.9%) [Glucose-Fructose Syrup, Apricot Puree, Acidity Regulators (Citric Acid, Trisodium Citrate), Gelling Agent (Pectin)], Skimmed MILK Powder, Baking Powder [Raising Agents (E575, E500(ii), E336(i)), Maize Starch], Stabiliser (Guar Gum), Toffee Flavouring (0.3%), Water, Salt.