

Supplier's Product Code :
Product Added :
Last Updated by Supplier :
erudus id :

F071560
03 April 2024
03 April 2024
4215332d8382483faf56ee01158daf00



The information on the **Erudus System** has been supplied by the manufacturers of the products and, whilst the owners of the Erudus System take steps to ensure the information is regularly updated, they give no warranty and no guarantee that the information is accurate. Product information and ingredients may change, please always read product labels carefully in addition to using the information provided by Erudus One.

We do not accept liability for any inaccuracies or incorrect information contained on this site. Please visit <http://www.erudus.com/terms-and-conditions> for full terms and conditions.

Toffee Apple Crumble Traycake 1 x 18 ptn

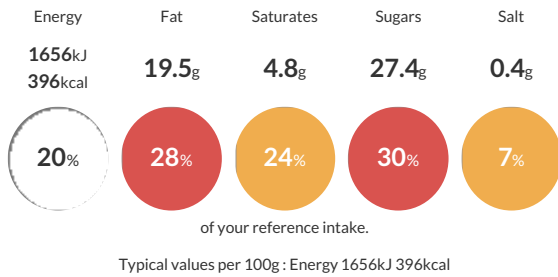
Short Product Name:
Toffee Apple Crumble Traycake

A spiced apple sponge with chunks of stem ginger, sprinkled with a cinnamon crumble and decorated with toffee sauce and toffee pieces.

Traded Unit GTIN: **5060044071560** Internal GTIN: Supplier: **The Handmade Cake Co.** Suppliers Product Code: **F071560**

Reference Intake

Each 100g portion contains:



Nutritional Information

Typical Values	Per 100g
Energy	1656kJ 396kCal
Carbohydrates	48.9g
of which sugars	27.4g
Fat	19.5g
of which saturates	4.8g
Fibre	1.6g
Protein	5.2g
Salt	0.4g

Allergy Information

Key: **Contains** **May Contain**



Dietary Information

Key: **Suitable for**



Allergen Statement

For allergens, including cereals containing gluten, see ingredients in **BOLD**. This product may contain traces of nuts as it has been made in a bakery that uses nut ingredients.

Ingredients

WHEAT Flour (with Calcium Carbonate, Niacin, Iron, Thiamin), Brown Sugar [Sugar, Cane Molasses], Pasteurised Free Range **EGG**, Rapeseed Oil, Apple Filling (6%) [Diced Apple, Water, Apple Puree, Sugar, Stabiliser (Modified Waxy Maize Starch), Acidity Regulator (Citric Acid)], Water, Salted Butter [Butter (**MILK**), Salt], Stem Ginger (3.9%) [Ginger, Sugar], Toffee Pieces (2.2%) [Sugar, Glucose Syrup, Sweetened Condensed Milk (Whole **MILK**, Sugar), Palm Oil, Butter Oil (**MILK**), Natural Flavouring, Coconut Oil, Glazing Agent (Carnauba Wax)], Demerara Sugar [Sugar, Cane Molasses], Baking Powder [Raising Agents (E575, E500(ii), E336(i)), Maize Starch], Whipping Cream [Cream (**MILK**), Stabiliser (Carrageenan)], Invert Sugar Syrup, Skimmed **MILK** Powder, Natural Flavourings, Ground Mixed Spice (0.3%), Ground Cinnamon (0.2%), Stabiliser (Xanthan Gum), Modified Maize Starch, Thickener (Pectin).