

Supplier's Product Code :
Product Added :
Last Updated by Supplier :
erudus id :

222848
26 October 2009
30 September 2022
4268f91ff23c4f13a2b1275ddc63b844



The information on the **Erudus System** has been supplied by the manufacturers of the products and, whilst the owners of the Erudus System take steps to ensure the information is regularly updated, they give no warranty and no guarantee that the information is accurate. Product information and ingredients may change, please always read product labels carefully in addition to using the information provided by Erudus One.

We do not accept liability for any inaccuracies or incorrect information contained on this site. Please visit <http://www.erudus.com/terms-and-conditions> for full terms and conditions.

Tomato and Cheese Swirly

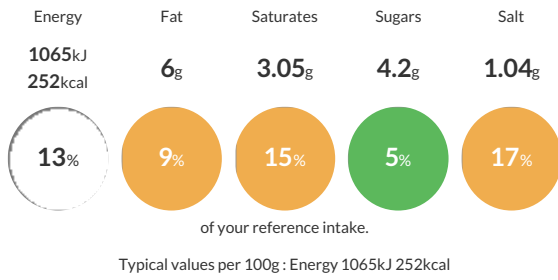
Short Product Name:
Tomato and Cheese Swirly

Real tomato filling in a soft bread swirl, topped with Gouda cheese and basil.

Traded Unit GTIN: **05038910010690** Internal GTIN: Supplier: **Lantmannen Unibake** Suppliers Product Code: **222848**

Reference Intake

Each 100g portion contains:



Nutritional Information

Typical Values	Per 100g
Energy	1065kJ 252kCal
Carbohydrates	39.58g
of which sugars	4.2g
Fat	6g
of which saturates	3.05g
Fibre	2.06g
Protein	9.05g
Salt	1.04g

Allergy Information

Key: **Contains** **May Contain**



Allergen Statement

For allergens, including cereals containing gluten, see ingredients in capitals.
May also contain traces of nuts, sesame seeds, soya and mustard.

Ingredients

WHEAT Flour (Flour treatment agent (Ascorbic acid (E300))), Tomato Filling [21.0%] (Water, Tomato [15%]*, Tomato Puree [12.5%]*, Onion, Dried Onions, Tapioca Starch, Rice Starch, Sunflower Oil, Natural Flavouring (contains **CELERY**), Hydrolysed Vegetable Protein, Salt, Colour (Paprika Extract (E160c)), Lemon Juice Concentrate, Garlic Powder, Black Pepper), Water, Gouda Cheese [12.0%] (**MILK**), Sugar, Yeast, Bechamel Sauce (**MILK** Powder, Maize Starch, Powdered **EGG** White, Salt, Thickener (Xanthan Gum (E415)), Glucose Syrup, Sugar, Garlic Powder), Rapeseed Oil, Salt, Dried **WHEAT** Sourdough, Potato Starch, Basil, Garlic, Flour treatment agent (Enzymes (Hemicellulase, Alphaamylase)).

*corresponds to 3% Tomato and 2.5% Tomato Puree in the whole product

Dietary Information

Key: **Suitable for**

