

Supplier's Product Code :
 Product Added :
 Last Updated by Supplier :
 erudus id :

8174
 12 September 2024
 12 September 2024
 4280ca0757be4e16b4e36568d931a8a0



The information on the **Erudus System** has been supplied by the manufacturers of the products and, whilst the owners of the Erudus System take steps to ensure the information is regularly updated, they give no warranty and no guarantee that the information is accurate. Product information and ingredients may change, please always read product labels carefully in addition to using the information provided by Erudus One.

We do not accept liability for any inaccuracies or incorrect information contained on this site. Please visit <http://www.erudus.com/terms-and-conditions> for full terms and conditions.

Kingsmill Professional Malted Bloomer 700g

Short Product Name:

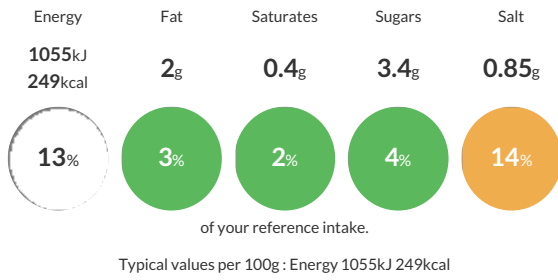
Brown Bread with Malted Wheat Flakes

Brown Bread with Malted Wheat Flakes

Traded Unit GTIN: **05010092809011** Internal GTIN: **5010092817412** Supplier: **Allied Bakeries** Suppliers Product Code: **8174**

Reference Intake

Each 100g portion contains:



Nutritional Information

Typical Values	Per 100g
Energy	1055kJ 249kCal
Carbohydrates	46.2g
of which sugars	3.4g
Fat	2g
of which saturates	0.4g
Fibre	3.6g
Protein	9.4g
Salt	0.85g

Allergy Information

Key: **Contains** **May Contain**

Contains Cereal/Gluten	Does Not Contain Milk	Does Not Contain Eggs	Does Not Contain Peanuts	Does Not Contain Nuts	Does Not Contain Crustaceans	Does Not Contain Mustard
Does Not Contain Fish	Does Not Contain Lupin	Does Not Contain Sesame	Does Not Contain Celery	Contains Soya	Does Not Contain Molluscs	Does Not Contain Sulphur Dioxide

Dietary Information

Key: **Suitable for**

Suitable for Vegetarian	Suitable for Vegan	May not be suitable for Kosher	May not be suitable for Halal	NO DATA for Coeliac
-------------------------	--------------------	--------------------------------	-------------------------------	---------------------

Ingredients

WHEAT Flour (with calcium, iron, niacin (B3) and thiamin (B1)), Water, Malted WHEAT Flakes (6%), Yeast, Malted BARLEY Flour, WHEAT Protein, WHEAT Bran, Fermented WHEAT Flour, Salt, Sustainable SOYA Flour, Vegetable Oils (Rapeseed Oil, Sustainable Palm), Dried WHEAT Sourdough, WHEAT Semolina, Vinegar, Flour Treatment Agent: Ascorbic Acid (Vitamin C).