

Supplier's Product Code :
Product Added :
Last Updated by Supplier :
erudus id :

59115
25 March 2025
25 March 2025
4419006273ad4b84a3ca0628d5d8b75b



The information on the Erudus System has been supplied by the manufacturers of the products and, whilst the owners of the Erudus System take steps to ensure the information is regularly updated, they give no warranty and no guarantee that the information is accurate. Product information and ingredients may change, please always read product labels carefully in addition to using the information provided by Erudus One.

We do not accept liability for any inaccuracies or incorrect information contained on this site. Please visit <http://www.erudus.com/terms-and-conditions> for full terms and conditions.

SOPHIE'S ANGEL SPARKLE CAKE

Short Product Name:

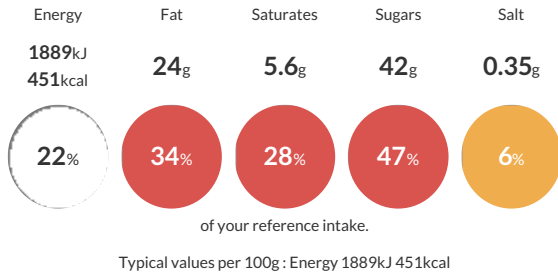
SOPHIE'S ANGEL SPARKLE CAKE (1x14 Pre-portioned)

A three-layer moist sponge cake comprising of marble layers sandwiched one with strawberry jam and other with sweet buttercream. Smothered in buttercream and finished with a sprinkling of colourful crunchy spheres. This gateau is pre-portioned into 14 portions and packed 1 gateau per outer.

Traded Unit GTIN: 5015091591158 Internal GTIN: Supplier : CDT Sidoli (Welshpool) Ltd Suppliers Product Code : 59115

Reference Intake

Each 100g portion contains:



Nutritional Information

Typical Values	Per 100g
Energy	1889kJ 451kCal
Carbohydrates	56g
of which sugars	42g
Fat	24g
of which saturates	5.6g
Fibre	0.7g
Protein	3.3g
Salt	0.35g

Allergy Information

Key: Contains May Contain



Dietary Information

Key: Suitable for



Allergen Statement

MADE IN A FACTORY THAT ALSO HANDLES THE FOLLOWING ALLERGEN: NUTS

Ingredients

Sugar, WHEAT flour (with added calcium, niacin, iron, thiamin), EGG, rapeseed oil, sugar strands (sugar, glucose syrup, water, glazing agent (shellac), red beetroot concentrate, coconut oil, colours (anthocyanin, curcumin)), butter (MILK), margarine (palm oil, rapeseed oil, water, emulsifier (mono- and diglycerides of fatty acids), natural flavouring), strawberry jam (5%) (glucose-fructose syrup, strawberries, sugar, gelling agent (pectins), colour (anthocyanin), acidity regulators (sodium citrates, citric acid), natural flavouring), humectant (glycerine), raising agents (disodium diphosphates, sodium bicarbonate), modified maize starch, colours (curcumin, carmine), natural flavouring.