

Supplier's Product Code :
 Product Added :
 Last Updated by Supplier :
 erudus id :

F13850
 19 August 2024
 19 August 2024
 454beca27f5e476a93c5bc54c464f701



The information on the **Erudus System** has been supplied by the manufacturers of the products and, whilst the owners of the Erudus System take steps to ensure the information is regularly updated, they give no warranty and no guarantee that the information is accurate. Product information and ingredients may change, please always read product labels carefully in addition to using the information provided by Erudus One.

We do not accept liability for any inaccuracies or incorrect information contained on this site. Please visit <http://www.erudus.com/terms-and-conditions> for full terms and conditions.

Alabama Chocolate Fudge Cake Pre-Portioned x 16

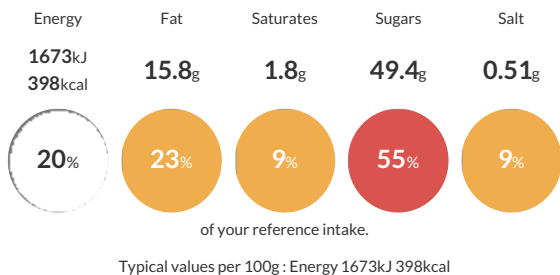
Short Product Name:
 Alabama Chocolate Fudge Cake

A deliciously moist rich chocolate cake filled and covered with chocolate fudge icing before being hand decorated with a spiral swirl design. Pre-cut into 16 portions.

Traded Unit GTIN: **05010823516898** Internal GTIN: Supplier: **Mademoiselle Desserts (Taunton)** Suppliers Product Code: **F13850**

Reference Intake

Each 100g portion contains:



Nutritional Information

Typical Values	Per 100g
Energy	1673kJ 398kCal
Carbohydrates	58.4g
of which sugars	49.4g
Fat	15.8g
of which saturates	1.8g
Fibre	2.6g
Protein	3.9g
Salt	0.51g

Allergy Information

Key: **Contains** **May Contain**

Contains Cereal/Gluten	Contains Milk	Contains Eggs	Does Not Contain Peanuts	May Contain Nuts	Does Not Contain Crustaceans	Does Not Contain Mustard
Does Not Contain Fish	Does Not Contain Lupin	Does Not Contain Sesame	Does Not Contain Celery	Does Not Contain Soya	Does Not Contain Molluscs	Does Not Contain Sulphur Dioxide

Dietary Information

Key: **Suitable for**

Suitable for Vegetarian	May not be suitable for Vegan	May not be suitable for Kosher	May not be suitable for Halal	NO DATA for Coeliac
-------------------------	-------------------------------	--------------------------------	-------------------------------	---------------------

Ingredients

Sugar, **WHEAT** Flour (**WHEAT** Flour, Calcium Carbonate, Iron, Niacin, Thiamin), Rapeseed Oil, **BUTTERMILK**, Fat Reduced Cocoa Powder (7.2%), Water, **EGG**, Dried Glucose Syrup, Palm Oil, **EGG** Yolk, Raising Agent (Sodium Bicarbonate), Emulsifiers (Mono- And Diglycerides Of Fatty Acids, Polyglycerol Esters Of Fatty Acids), Acidity Regulator (Potassium Hydroxide).