

Supplier's Product Code :
 Product Added :
 Last Updated by Supplier :
 erudus id :

SP223000F
 22 August 2023
 22 August 2023
 4580e6c096fe41238cf27063afb72d67



The information on the Erudus System has been supplied by the manufacturers of the products and, whilst the owners of the Erudus System take steps to ensure the information is regularly updated, they give no warranty and no guarantee that the information is accurate. Product information and ingredients may change, please always read product labels carefully in addition to using the information provided by Erudus One.

We do not accept liability for any inaccuracies or incorrect information contained on this site. Please visit <http://www.erudus.com/terms-and-conditions> for full terms and conditions.

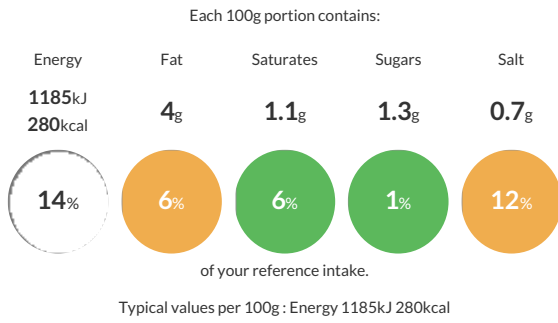
Spaghetti / Egg Pasta 60g Portion Frozen 3Kg

Short Product Name:
 Spaghetti Egg 60g Nest

Egg Pasta

Traded Unit GTIN: - Internal GTIN: 5055430400666 Supplier: La Tua Pasta Suppliers Product Code: SP223000F

Reference Intake



Nutritional Information

Typical Values	Per 100g
Energy	1185kJ 280kcal
Carbohydrates	47.7g
of which sugars	1.3g
Fat	4g
of which saturates	1.1g
Fibre	-g
Protein	12.6g
Salt	0.7g

Allergy Information

Key: Contains May Contain

Contains Cereal/Gluten	May Contain Milk	Contains Eggs	Does Not Contain Peanuts	May Contain Nuts	May Contain Crustaceans	May Contain Mustard
May Contain Fish	Does Not Contain Lupin	Does Not Contain Sesame	May Contain Celery	May Contain Soya	Does Not Contain Molluscs	Does Not Contain Sulphur Dioxide

Dietary Information

Key: Suitable for

Suitable for Vegetarian	May not be suitable for Vegan	May not be suitable for Kosher	May not be suitable for Halal	May not be suitable for Coeliac
-------------------------	-------------------------------	--------------------------------	-------------------------------	---------------------------------

Allergen Statement

Produced in a factory that handles Wheat, Egg, Milk, Nut, Mustard, Crustacean, Fish, Celery and Soy.

Ingredients

Flour 00 (WHEAT, Calcium, Iron, Niacin, Thiamine), Pasteurised EGG (30%), Durum WHEAT Flour, Salt. Dusted with rice flour.