

Supplier's Product Code :
 Product Added :
 Last Updated by Supplier :
 erudus id :

FH0023
 30 October 2024
 30 October 2024
 45810722f1c64ecb82544dae00d0a5d0



The information on the Erudus System has been supplied by the manufacturers of the products and, whilst the owners of the Erudus System take steps to ensure the information is regularly updated, they give no warranty and no guarantee that the information is accurate. Product information and ingredients may change, please always read product labels carefully in addition to using the information provided by Erudus One.

We do not accept liability for any inaccuracies or incorrect information contained on this site. Please visit <http://www.erudus.com/terms-and-conditions> for full terms and conditions.

Jude's Plant Based Salted Caramel Stickbars - 20 x 80ml

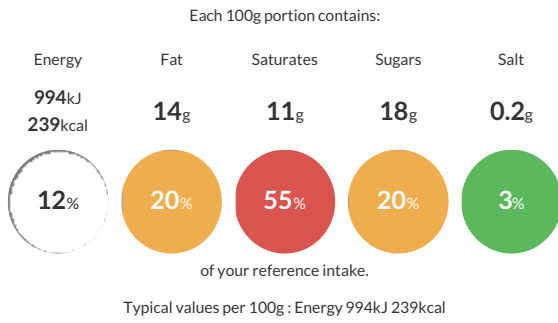
Short Product Name:

Jude's Plant Based Salted Caramel Stickbars - 20 x 80ml

Vegan salted caramel ice cream with caramel sauce enrobed with cocoa coating and cinder toffee pieces.

Traded Unit GTIN: 05060081116200 Internal GTIN: 5060081115913 Supplier: Judes Ices Suppliers Product Code: FH0023

Reference Intake



Nutritional Information

| Typical Values | Per 100g |
|--------------------|------------------|
| Energy | 994kJ 239kCal |
| Carbohydrates | 25g |
| of which sugars | 18g |
| Fat | 14g |
| of which saturates | 11g |
| Fibre | -g |
| Protein | 1g |
| Salt | 0.2g |

Allergy Information

Key: Contains May Contain

| | | | | | | |
|------------------------|------------------------|-------------------------|-------------------------|------------------|------------------------------|----------------------------------|
| Contains Cereal/Gluten | May Contain Milk | Does Not Contain Eggs | May Contain Peanuts | May Contain Nuts | Does Not Contain Crustaceans | Does Not Contain Mustard |
| Does Not Contain Fish | Does Not Contain Lupin | Does Not Contain Sesame | Does Not Contain Celery | Contains Soya | Does Not Contain Molluscs | Does Not Contain Sulphur Dioxide |

Dietary Information

Key: Suitable for

| | | | | |
|-------------------------|--------------------|--------------------------------|-------------------------------|---------------------|
| Suitable for Vegetarian | Suitable for Vegan | May not be suitable for Kosher | May not be suitable for Halal | NO DATA for Coeliac |
|-------------------------|--------------------|--------------------------------|-------------------------------|---------------------|

Allergen Statement

For allergens see ingredients in bold. May also contain allergens: milk, nuts and peanut.

Ingredients

Oat base [water, oat, vegetable oil (sunflower)], cocoa coating (29%) [sugar, cocoa butter†, vegetable fat (coconut), cocoa mass†, inulin, rice syrup, rice flour, emulsifier (lecithins (soya)), natural cocoa flavouring†, natural vanilla flavouring], glucose syrup, caramel sauce (7%) [glucose syrup, water, sugar, vegetable fat (coconut), coconut milk powder, emulsifier (lecithins), stabiliser (pectins), corn starch, salt], sugar, vegetable fat (coconut), cinder toffee pieces (3.5%) (sugar, glucose syrup, water), carob bean flour, soluble corn fibre, emulsifiers (mono - and diglycerides of fatty acids), caramelised sugar syrup (sugar, water), sea salt, natural flavouring, stabilisers (locust bean gum, guar gum).