

Supplier's Product Code :
Product Added :
Last Updated by Supplier :
erudus id :

F00441
12 June 2007
08 February 2023
458164238b8d476082191a0e1c5aedd3



The information on the **Erudus System** has been supplied by the manufacturers of the products and, whilst the owners of the Erudus System take steps to ensure the information is regularly updated, they give no warranty and no guarantee that the information is accurate. Product information and ingredients may change, please always read product labels carefully in addition to using the information provided by Erudus One.

We do not accept liability for any inaccuracies or incorrect information contained on this site. Please visit <http://www.erudus.com/terms-and-conditions> for full terms and conditions.

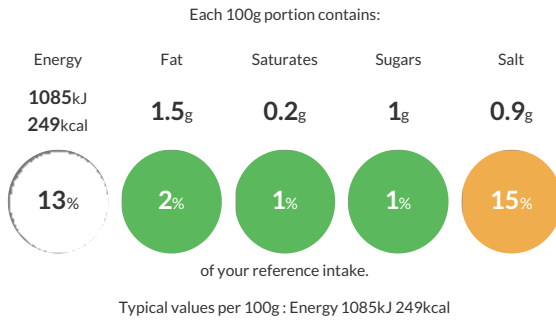
La Boulangerie Française Thaw and serve 40 x Malted wheat half baguettes

Short Product Name:

A fully baked French style malted wheat half baguette with 3 diagonal surface burst cuts on top

Traded Unit GTIN: **05010066957847** Internal GTIN: Supplier: **Kara Foodservice (Fletchers)** Suppliers Product Code: **F00441**

Reference Intake

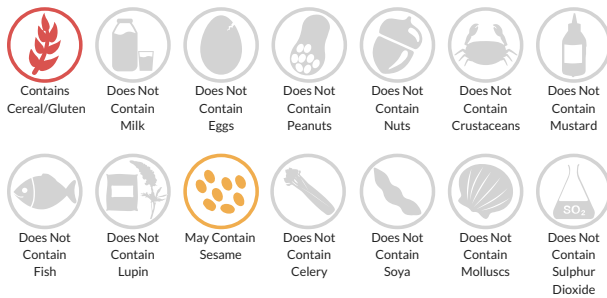


Nutritional Information

Typical Values	Per 100g
Energy	1085kJ 249kCal
Carbohydrates	50.6g
of which sugars	1g
Fat	1.5g
of which saturates	0.2g
Fibre	3.1g
Protein	8.3g
Salt	0.9g

Allergy Information

Key: **Contains** **May Contain**



Allergen Statement

For allergens, including cereals containing gluten, see ingredients in **CAPITALS**. Also, may contain sesame.

Ingredients

WHEAT Flour, (**WHEAT** Flour, Calcium Carbonate, Iron, Niacin, Thiamin), Water, Malted **WHEAT** Flakes, Malted **BARLEY**, Salt, **WHEAT** Bran, Yeast, **WHEAT** Gluten, **BARLEY** Fibre, Emulsifier (E472e), Flour Treatment Agent (E300).

Dietary Information

Key: **Suitable for**

