

Supplier's Product Code :
Product Added :
Last Updated by Supplier :
erudus id :

F00381
20 November 2006
06 September 2021
459a7648ec4a4c3c991914a6dd63782c



The information on the [Erudus System](#) has been supplied by the manufacturers of the products and, whilst the owners of the Erudus System take steps to ensure the information is regularly updated, they give no warranty and no guarantee that the information is accurate. Product information and ingredients may change, please always read product labels carefully in addition to using the information provided by Erudus One.

We do not accept liability for any inaccuracies or incorrect information contained on this site. Please visit <http://www.erudus.com/terms-and-conditions> for full terms and conditions.

Fletchers Thick Sliced White Bread 8 x 800g e

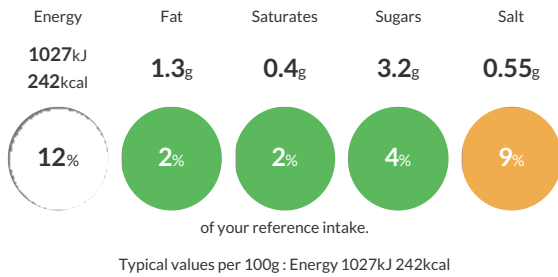
Short Product Name:
White Bread

A golden baked white thick sliced white loaf

Traded Unit GTIN: **05010066000802** Internal GTIN: Supplier: **Kara Foodservice (Fletchers)** Suppliers Product Code: **F00381**

Reference Intake

Each 100g portion contains:



Nutritional Information

Typical Values	Per 100g
Energy	1027kJ 242kCal
Carbohydrates	48.1g
of which sugars	3.2g
Fat	1.3g
of which saturates	0.4g
Fibre	2.7g
Protein	8.2g
Salt	0.55g

Allergy Information

Key: **Contains** **May Contain**



Allergen Statement

For allergens, including cereals containing gluten, see ingredients in **CAPITALS**.

Ingredients

Wheat Flour (**WHEAT** Flour, Calcium Carbonate, Niacin, Iron, Thiamin), Water, Palm Oil, Salt, Yeast, Emulsifier (E472e), Spirit Vinegar, **SOYA** Flour, Preservative (E282), Flour Treatment Agent (E300).

Dietary Information

Key: **Suitable for**

