

Supplier's Product Code :  
Product Added :  
Last Updated by Supplier :  
erudus id :

JJ\_NSMC001  
12 March 2016  
08 November 2022  
468e5b85b1fd4658903a587f514ac051



The information on the Erudus System has been supplied by the manufacturers of the products and, whilst the owners of the Erudus System take steps to ensure the information is regularly updated, they give no warranty and no guarantee that the information is accurate. Product information and ingredients may change, please always read product labels carefully in addition to using the information provided by Erudus One.

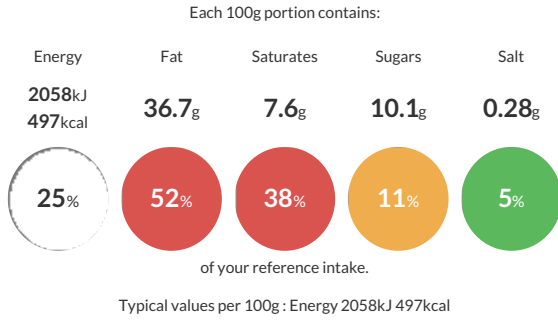
We do not accept liability for any inaccuracies or incorrect information contained on this site. Please visit <http://www.erudus.com/terms-and-conditions> for full terms and conditions.

## JimJams No Added Sugar Milk Chocolate Spread 350g

JimJams Milk Chocolate Spread is 83% less sugar than all other brands on the market. The natural sweetener we use does not promote tooth decay, has less effect on blood glucose levels and contains less calories than sugar. It has also just been awarded a two star Great Taste Award from the Guild of Fine Food. This spread is also very versatile and can be used as an ingredient in food to make anything from simple 'Better for you' Hot Chocolate or 'Lower Sugar' Chocolate Desserts.

Traded Unit GTIN: 15060376790051 Internal GTIN: 5060376790054 Supplier: JimJams Spreads Ltd Suppliers Product Code: JJ\_NSMC001

### Reference Intake



### Nutritional Information

Typical Values	Per 100g
Energy	2058kJ 497kCal
Carbohydrates	50.8g
of which sugars	10.1g
Fat	36.7g
of which saturates	7.6g
Fibre	0g
Protein	5.8g
Salt	0.28g

### Allergy Information

Key: Contains May Contain



#### Gluten Claim

Gluten content is less than 20ppm.

#### Allergen Statement

Made in a factory that handles nuts, milk & soy

### Ingredients

maltitol, vegetable oil (rapeseed), skimmed MILK powder, fat reduced cocoa, whey powder ( MILK), emulsifier (sunflower lecithin), natural vanilla flavouring

### Dietary Information

Key: Suitable for

