

Supplier's Product Code :
 Product Added :
 Last Updated by Supplier :
 erudus id :

18910
 10 February 2025
 10 February 2025
 46b16891391c40fb9af83faa54cef665



The information on the Erudus System has been supplied by the manufacturers of the products and, whilst the owners of the Erudus System take steps to ensure the information is regularly updated, they give no warranty and no guarantee that the information is accurate. Product information and ingredients may change, please always read product labels carefully in addition to using the information provided by Erudus One.

We do not accept liability for any inaccuracies or incorrect information contained on this site. Please visit <http://www.erudus.com/terms-and-conditions> for full terms and conditions.

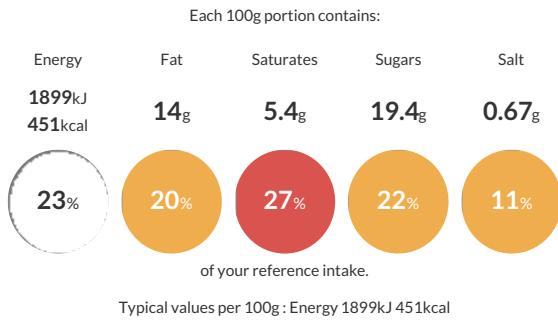
Lyons' Rich Tea 300g x 18

Short Product Name:
 Rich Tea

Malted barley biscuits.

Traded Unit GTIN: 05010049189104 Internal GTIN: 0072417075872 Supplier: FOX'S BURTON'S COMPANIES (FBC) UK Limited Suppliers Product Code: 18910

Reference Intake



Nutritional Information

Typical Values	Per 100g
Energy	1899kJ 451kCal
Carbohydrates	72.8g
of which sugars	19.4g
Fat	14g
of which saturates	5.4g
Fibre	2.7g
Protein	7.2g
Salt	0.67g

Allergy Information

Key: Contains May Contain

Contains Cereal/Gluten	Does Not Contain Milk	Does Not Contain Eggs	Does Not Contain Peanuts	Does Not Contain Nuts	Does Not Contain Crustaceans	Does Not Contain Mustard
Does Not Contain Fish	Does Not Contain Lupin	Does Not Contain Sesame	Does Not Contain Celery	Does Not Contain Soya	Does Not Contain Molluscs	Contains Sulphur Dioxide

Dietary Information

Key: Suitable for

Suitable for Vegetarian	May not be suitable for Vegan	May not be suitable for Kosher	May not be suitable for Halal	NO DATA for Coeliac
-------------------------	-------------------------------	--------------------------------	-------------------------------	---------------------

Ingredients

Wheat flour (with Calcium carbonate, Iron, Niacin, Thiamin), Sugar, Vegetable oils (Sustainable palm, Rapeseed), Barley and malt extract, Raising agents (Sodium bicarbonate, Ammonium bicarbonate, Disodium diphosphate), Glucose syrup, Salt, Preservative (Sodium metabisulphite).