

Supplier's Product Code :
 Product Added :
 Last Updated by Supplier :
 erudus id :

1605
 30 April 2024
 30 April 2024
 46f70cbd62614399abb372f6bfcccd8fe



The information on the **Erudus System** has been supplied by the manufacturers of the products and, whilst the owners of the Erudus System take steps to ensure the information is regularly updated, they give no warranty and no guarantee that the information is accurate. Product information and ingredients may change, please always read product labels carefully in addition to using the information provided by Erudus One.

We do not accept liability for any inaccuracies or incorrect information contained on this site. Please visit <http://www.erudus.com/terms-and-conditions> for full terms and conditions.

Whitby Seafoods Extra Large Scampi 10*450g

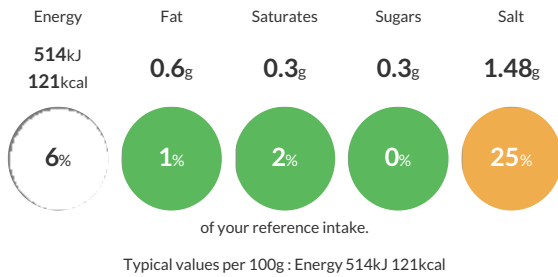
Short Product Name:
 Whitby Seafoods XL Scampi

Whole scampi (langoustine) tails in a crisp, golden crumb. Contains one or more tails per piece and added water.

Traded Unit GTIN: **05016316916053** Internal GTIN: **5016316016050** Supplier: **Whitby Seafoods Ltd** Suppliers Product Code: **1605**

Reference Intake

Each 100g portion contains:



Nutritional Information

Typical Values	Per 100g
Energy	514kJ 121kCal
Carbohydrates	20g
of which sugars	0.3g
Fat	0.6g
of which saturates	0.3g
Fibre	1.7g
Protein	9.4g
Salt	1.48g

Allergy Information

Key: **Contains** **May Contain**



Allergen Statement

For allergens including cereals containing **GLUTEN** please see ingredients in **BOLD**. May also contain **FISH** and **MOLLUSCS**

Ingredients

Scampi (CRUSTACEANS) (40%), Breadcrumbs (WHEAT Flour (WHEAT Flour, Calcium Carbonate, Iron, Niacin, Thiamin), Salt, Yeast, Rapeseed oil), Batter (Water, WHEAT Flour (WHEAT Flour, Calcium Carbonate, Iron, Niacin, Thiamin), Salt), Water, Stabilisers: E450, E451, E452.

Dietary Information

Key: **Suitable for**

