

Supplier's Product Code :
Product Added :
Last Updated by Supplier :
erudus id :

LM19FR6P51
23 August 2021
15 September 2023
478ff9e78996478fb707b0111638ef27



The information on the **Erudus System** has been supplied by the manufacturers of the products and, whilst the owners of the Erudus System take steps to ensure the information is regularly updated, they give no warranty and no guarantee that the information is accurate. Product information and ingredients may change, please always read product labels carefully in addition to using the information provided by Erudus One.

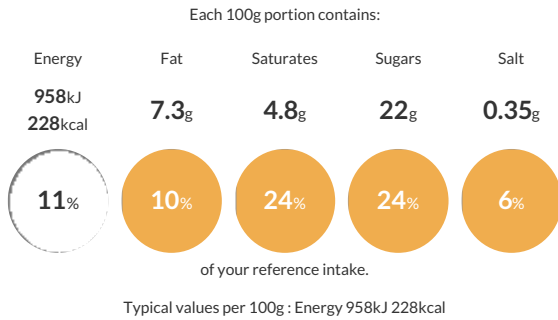
We do not accept liability for any inaccuracies or incorrect information contained on this site. Please visit <http://www.erudus.com/terms-and-conditions> for full terms and conditions.

Little Moons Salted Caramel Mochi Ice Cream 6x32g

Features Great taste - 2019 Bite sized adventures 73 joyful calories per ball Sweet escape No artificial flavourings, colours or preservatives Dietary gluten free Suitable for vegetarians Ingredients: Whole MILK, water, double cream (MILK), rice flour, sugar, light brown sugar (sugar, molasses), trehalose*, dried glucose syrup, invert sugar syrup, skimmed MILK powder, caramel paste (1%) (glucose syrup, caramelised sugar, invert sugar syrup, natural flavouring), tapioca starch, Himalayan sea salt (0.2%), stabilisers (guar gum, locust bean gum, cellulose gum, carrageenan, xanthan gum), natural flavourings, emulsifier (mono and diglycerides of fatty acids), salt, colour (annatto norbixin), SOYA. Allergy Information: May also contain NUTS, PEANUTS & SESAME.

Traded Unit GTIN: **05027324002157** Internal GTIN: **5027324001761** Supplier: **Little Moons** Suppliers Product Code: **LM19FR6P51**

Reference Intake



Nutritional Information

Typical Values	Per 100g
Energy	958kJ 228kCal
Carbohydrates	38g
of which sugars	22g
Fat	7.3g
of which saturates	4.8g
Fibre	-g
Protein	2.6g
Salt	0.35g

Allergy Information

Key: **Contains** **May Contain**



Gluten Claim

Gluten content is less than 20ppm.

Allergen Statement

May also contain nuts, peanuts & sesame.

Dietary Information

Key: **Suitable for**



Ingredients

Whole MILK, water, double cream (MILK), rice flour, sugar, light brown sugar (sugar, molasses), trehalose*, dried glucose syrup, invert sugar syrup, skimmed MILK powder, caramel paste (1%) (glucose syrup, caramelised sugar, invert sugar syrup, natural flavouring), tapioca starch, Himalayan sea salt (0.2%), stabilisers (guar gum, locust bean gum, cellulose gum, carrageenan, xanthan gum), natural flavourings, emulsifier (mono and diglycerides of fatty acids), salt, colour (annatto norbixin), SOYA.