

Supplier's Product Code :  
 Product Added :  
 Last Updated by Supplier :  
 erudus id :

13396  
 31 August 2016  
 02 May 2023  
 49784859478a40909ae208b6fa2bac00



The information on the **Erudus System** has been supplied by the manufacturers of the products and, whilst the owners of the Erudus System take steps to ensure the information is regularly updated, they give no warranty and no guarantee that the information is accurate. Product information and ingredients may change, please always read product labels carefully in addition to using the information provided by Erudus One.

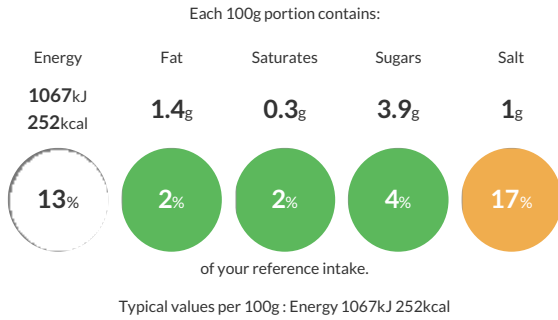
We do not accept liability for any inaccuracies or incorrect information contained on this site. Please visit <http://www.erudus.com/terms-and-conditions> for full terms and conditions.

## 800g 19+2 MWG D Tin (Box 8FR)

Brown bread with malted wheat flakes, barley malt flour and buckwheat.

Traded Unit GTIN: **05011579220992** Internal GTIN: Supplier: **Frank Roberts & Sons Ltd** Suppliers Product Code: **13396**

### Reference Intake



### Nutritional Information

| Typical Values     | Per 100g          |
|--------------------|-------------------|
| Energy             | 1067kJ<br>252kCal |
| Carbohydrates      | 49g               |
| of which sugars    | 3.9g              |
| Fat                | 1.4g              |
| of which saturates | 0.3g              |
| Fibre              | 2.6g              |
| Protein            | 9.5g              |
| Salt               | 1g                |

### Allergy Information

Key: **Contains** **May Contain**

|                        |                        |                         |                          |                       |                              |                                  |
|------------------------|------------------------|-------------------------|--------------------------|-----------------------|------------------------------|----------------------------------|
| Contains Cereal/Gluten | Does Not Contain Milk  | Does Not Contain Eggs   | Does Not Contain Peanuts | Does Not Contain Nuts | Does Not Contain Crustaceans | Does Not Contain Mustard         |
| Does Not Contain Fish  | Does Not Contain Lupin | Does Not Contain Sesame | Does Not Contain Celery  | Contains Soya         | Does Not Contain Molluscs    | Does Not Contain Sulphur Dioxide |

### Dietary Information

Key: **Suitable for**

|                         |                    |                                |                               |                                 |
|-------------------------|--------------------|--------------------------------|-------------------------------|---------------------------------|
| Suitable for Vegetarian | Suitable for Vegan | May not be suitable for Kosher | May not be suitable for Halal | May not be suitable for Coeliac |
|-------------------------|--------------------|--------------------------------|-------------------------------|---------------------------------|

### Ingredients

WHEAT Flour (with added calcium, iron, niacin and thiamine), Water, Malted WHEAT Flakes (9.0%), Yeast, WHEAT Gluten, BARLEY Malt Flour, Salt, Buckwheat Flour, Emulsifier: E472e. SOYA Flour, Preservative: E282. Rapeseed Oil, Flour Treatment Agent: E300.