

Supplier's Product Code :  
Product Added :  
Last Updated by Supplier :  
erudus id :

DCC4x5  
10 April 2024  
10 April 2024  
49f1d7f66bfc405e8790cf723e787e07



The information on the Erudus System has been supplied by the manufacturers of the products and, whilst the owners of the Erudus System take steps to ensure the information is regularly updated, they give no warranty and no guarantee that the information is accurate. Product information and ingredients may change, please always read product labels carefully in addition to using the information provided by Erudus One.

We do not accept liability for any inaccuracies or incorrect information contained on this site. Please visit <http://www.erudus.com/terms-and-conditions> for full terms and conditions.

## Double Chocolate Chip : 4 x 5 litre

Short Product Name:

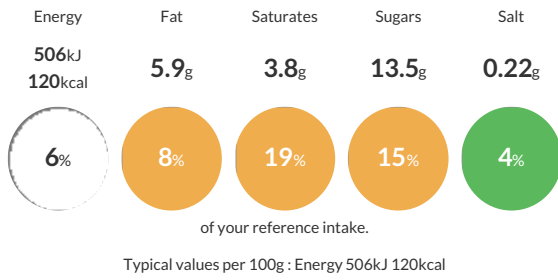
Double Chocolate Chip Ice Cream

Double Chocolate Chip Ice Cream - Rich chocolate ice cream with chunky milk chocolate chips.

Traded Unit GTIN: 5060016670944 Internal GTIN: 5060016670937 Supplier: Yorvale Ltd Suppliers Product Code: DCC4x5

### Reference Intake

Each 100g portion contains:



### Nutritional Information

Typical Values	Per 100g
Energy	506kJ 120kCal
Carbohydrates	15.2g
of which sugars	13.5g
Fat	5.9g
of which saturates	3.8g
Fibre	0.2g
Protein	2.3g
Salt	0.22g

### Allergy Information

Key: Contains May Contain



### Dietary Information

Key: Suitable for



### Allergen Statement

This product has been produced in a factory that uses nut ingredients.

### Ingredients

Whole **MILK**, Sugar, Double Cream (**MILK**), **MILK** Chocolate Chips (8.6%)(Sugar, Cocoa Butter, Skimmed **MILK** Powder, Cocoa Mass, Whole **MILK** Powder, Whey Powder (**MILK**), Anhydrous **MILK** Fat, Emulsifier: **SOYA** /Lecithin, Natural Vanilla Flavouring), Glucose Syrup, Cocoa Powder, Skimmed **MILK** Powder, Cocoa Mass, Emulsifier: Mono- and Diglycerides of Fatty Acids, Stabilisers (Guar Gum, Carrageenan, Locust Bean Gum).