

Supplier's Product Code :
Product Added :
Last Updated by Supplier :
erudus id :

SPSC (NG)
28 March 2022
01 April 2022
49ff56da61924339a4b20d1f0919ee23



The information on the **Erudus System** has been supplied by the manufacturers of the products and, whilst the owners of the Erudus System take steps to ensure the information is regularly updated, they give no warranty and no guarantee that the information is accurate. Product information and ingredients may change, please always read product labels carefully in addition to using the information provided by Erudus One.

We do not accept liability for any inaccuracies or incorrect information contained on this site. Please visit <http://www.erudus.com/terms-and-conditions> for full terms and conditions.

Sweet Potato & Spinach Curry (NG) 1.400kg x 2

Short Product Name:

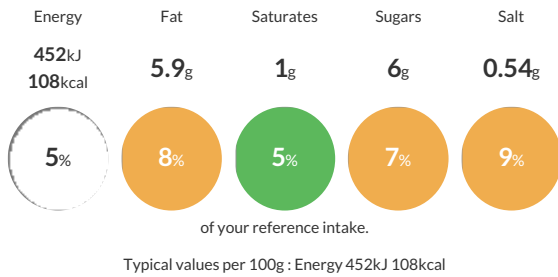
Sweet Potato & Spinach Curry

Cooked sweet potato in a mild curry sauce with spinach

Traded Unit GTIN: **5055775108081** Internal GTIN: Supplier: **Scheff Foods Ltd** Suppliers Product Code: **SPSC (NG)**

Reference Intake

Each 100g portion contains:



Nutritional Information

Typical Values	Per 100g
Energy	452kJ 108kCal
Carbohydrates	11.4g
of which sugars	6g
Fat	5.9g
of which saturates	1g
Fibre	2g
Protein	1.5g
Salt	0.54g

Allergy Information

Key: **Contains** **May Contain**



Dietary Information

Key: **Suitable for**



Ingredients

Sweet Potato (25%), Onion, Water, Tomato, Coconut Milk (Coconut Extract, Water), Rapeseed Oil, Chickpeas, Spinach (3%), Red Pepper, Coconut Cream, Spices (Dried Mangosteen, Mango Powder, Herb) [MUSTARD], Tomato Puree, Ginger Puree, Garlic Puree, Lemon Juice, Sugar, Cornflour, Salt