

Supplier's Product Code :  
Product Added :  
Last Updated by Supplier :  
erudus id :

758162  
09 February 2024  
09 February 2024  
4ab838044f9a45cf978a4e45cef5e61a



The information on the Erudus System has been supplied by the manufacturers of the products and, whilst the owners of the Erudus System take steps to ensure the information is regularly updated, they give no warranty and no guarantee that the information is accurate. Product information and ingredients may change, please always read product labels carefully in addition to using the information provided by Erudus One.

We do not accept liability for any inaccuracies or incorrect information contained on this site. Please visit <http://www.erudus.com/terms-and-conditions> for full terms and conditions.

## Whole farmed seabass gutted & gilled (6 x 300-400g)

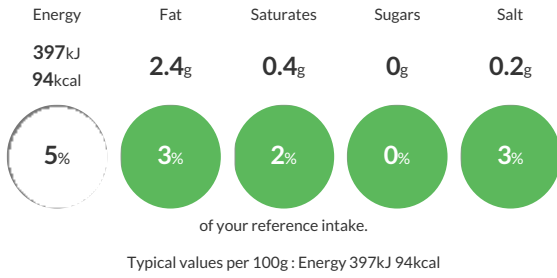
Short Product Name:  
Whole Seabass

Whole farmed seabass scaled, gutted and gilled (4 x 300-400g)

Traded Unit GTIN:  Internal GTIN: Supplier: **M&J Seafood** Suppliers Product Code: **758162**

### Reference Intake

Each 100g portion contains:



### Nutritional Information

Typical Values	Per 100g
Energy	397kJ 94kCal
Carbohydrates	0g
of which sugars	0g
Fat	2.4g
of which saturates	0.4g
Fibre	0g
Protein	17.9g
Salt	0.2g

### Allergy Information

Key: **Contains** **May Contain**



### Dietary Information

Key: **Suitable for**



### Ingredients

Seabass (*Dicentrarchus labrax*) (FISH).