

Supplier's Product Code :  
Product Added :  
Last Updated by Supplier :  
erudus id :

CHH275  
10 December 2024  
10 December 2024  
4cc926fb44144b9b993ecf88552c8452



The information on the Erudus System has been supplied by the manufacturers of the products and, whilst the owners of the Erudus System take steps to ensure the information is regularly updated, they give no warranty and no guarantee that the information is accurate. Product information and ingredients may change, please always read product labels carefully in addition to using the information provided by Erudus One.

We do not accept liability for any inaccuracies or incorrect information contained on this site. Please visit <http://www.erudus.com/terms-and-conditions> for full terms and conditions.

## Chicken & Ham Pie (275g)

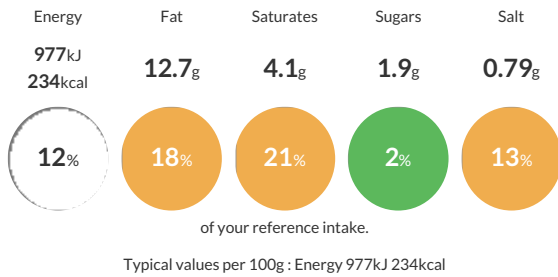
Short Product Name:  
Chicken & Ham Pie

Chicken & Ham Pie (275g)

Traded Unit GTIN:  Internal GTIN:  Supplier:  Bell House Foods Ltd Suppliers Product Code:  CHH275

### Reference Intake

Each 100g portion contains:



### Nutritional Information

Typical Values	Per 100g
Energy	977kJ 234kCal
Carbohydrates	20.5g
of which sugars	1.9g
Fat	12.7g
of which saturates	4.1g
Fibre	1.1g
Protein	8.8g
Salt	0.79g

### Allergy Information

Key:  Contains  May Contain



### Dietary Information

Key:  Suitable for



### Ingredients

Filling: Chicken (21%), Ham (16%), Onion, Leek, Pea, Cream ( MILK), MILK, Chicken Stock (Water, Chicken Extract, Flavorings (contain EGG) Glucose Syrup, Salt, Yeast Extract, Vegetable Oil ), Water, Maize Starch, EGG, Salt, Pepper.  
Pastry: Wheat Flour (WHEAT, Calcium Carbonate, Iron, Niacin, Thiamin) Vegetable Shortening (Palm & Rapeseed Oils) , Margarine (Vegetable Oil, Water, Salt, Emulsifiers, (Mono & Diglycerides of fatty acids) Preservatives (Potassium Sorbete, Citric Acid), Colour (Annatto & Curcmin) Flavouring), MILK, Water, Salt, EGG.