

Supplier's Product Code :
Product Added :
Last Updated by Supplier :
erudus id :

WGB152
26 November 2012
21 December 2023
4d8edd1a8c034441b1320517a9621f7f



The information on the Erudus System has been supplied by the manufacturers of the products and, whilst the owners of the Erudus System take steps to ensure the information is regularly updated, they give no warranty and no guarantee that the information is accurate. Product information and ingredients may change, please always read product labels carefully in addition to using the information provided by Erudus One.

We do not accept liability for any inaccuracies or incorrect information contained on this site. Please visit <http://www.erudus.com/terms-and-conditions> for full terms and conditions.

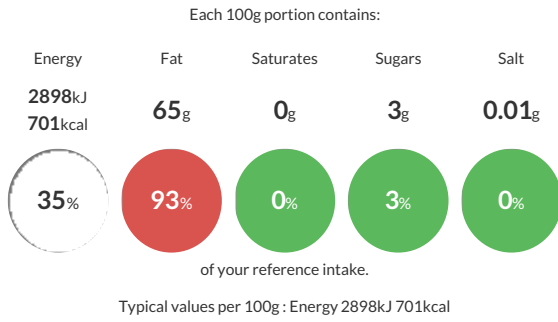
BUCHANANS WALNUT HALVES

Short Product Name:
WALNUT HALVES

Walnut Kernels. Light and light amber. Colour will vary from pinkish/light tan to dark brown skin (dependant on grade) which when peeled back reveals a creamery/off white colour. They will have a firm, crisp texture, free from oily rubbery or soft nuts.

Traded Unit GTIN: 5010398001553 Internal GTIN: 5010398001478 Supplier : W. G. Buchanan & Son Ltd Suppliers Product Code : WGB152

Reference Intake



Nutritional Information

Typical Values	Per 100g
Energy	2898kJ 701kCal
Carbohydrates	14g
of which sugars	3g
Fat	65g
of which saturates	0g
Fibre	-g
Protein	15g
Salt	0.01g

Allergy Information

Key: **Contains** **May Contain**



Dietary Information

Key: **Suitable for**



Ingredients

WALNUTS