

Supplier's Product Code :  
Product Added :  
Last Updated by Supplier :  
erudus id :

012228P  
26 November 2024  
26 November 2024  
4e485d4d3064472dac8741fe1e16aab9



The information on the Erudus System has been supplied by the manufacturers of the products and, whilst the owners of the Erudus System take steps to ensure the information is regularly updated, they give no warranty and no guarantee that the information is accurate. Product information and ingredients may change, please always read product labels carefully in addition to using the information provided by Erudus One.

We do not accept liability for any inaccuracies or incorrect information contained on this site. Please visit <http://www.erudus.com/terms-and-conditions> for full terms and conditions.

## Purple Pineapple Sliced Chicken Tikka 2.5kg

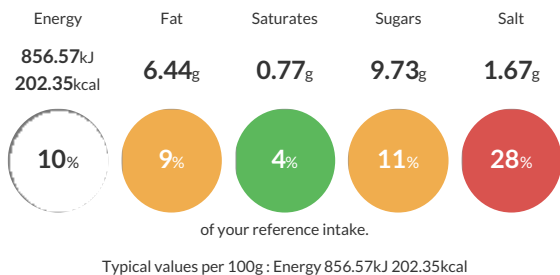
Short Product Name:  
Sliced Chicken Tikka

Sliced chicken coated in a mild curry sauce

Traded Unit GTIN:  Internal GTIN:  Supplier:  Suppliers Product Code:

### Reference Intake

Each 100g portion contains:



### Nutritional Information

Typical Values	Per 100g
Energy	856.57kJ 202.35kCal
Carbohydrates	13.49g
of which sugars	9.73g
Fat	6.44g
of which saturates	0.77g
Fibre	0.32g
Protein	22.3g
Salt	1.67g

### Allergy Information

Key:  Contains  May Contain



### Dietary Information

Key:  Suitable for



### Ingredients

Roasted Sliced Chicken (Foodfellas) 60% (Chicken breast, Rice Starch, Salt, Dextrose, D-Xylose, Maltodextrin, Stabilisers (Sodium Bicarbonate, Sodium Citrates), Tikka Sauce 34% (Water, Glucose Syrup Solids, Spirit Vinegar, Thickener (E1422 Modified Starch), Tomato Paste, Rapeseed Oil, Spice (Cayenne, Coriander, Cumin), Salt, Milk Powder, Lemon Juice Concentrate, Herb (Mint, Parsley), Garlic, Paprika (E160c) (MILK) Free Range Real Mayonnaise 6% (Rapeseed Oil, Water, Sugar, Stabiliser: Modified Maize Starch (E1422)). Preservative: Acetic Acid (E260). Pasteurised Free Range Egg Yolk Powder, Stabiliser: Xanthan Gum (E415). Salt, Preservative: Potassium Sorbate (E202), Lutein (E161b) (EGGS) Mint 1% (Dried Mint).