

Supplier's Product Code :
Product Added :
Last Updated by Supplier :
erudus id :

074509
16 October 2024
16 October 2024
4ee8cb7338f246e3972792ab50cf1d9e



The information on the Erudus System has been supplied by the manufacturers of the products and, whilst the owners of the Erudus System take steps to ensure the information is regularly updated, they give no warranty and no guarantee that the information is accurate. Product information and ingredients may change, please always read product labels carefully in addition to using the information provided by Erudus One.

We do not accept liability for any inaccuracies or incorrect information contained on this site. Please visit <http://www.erudus.com/terms-and-conditions> for full terms and conditions.

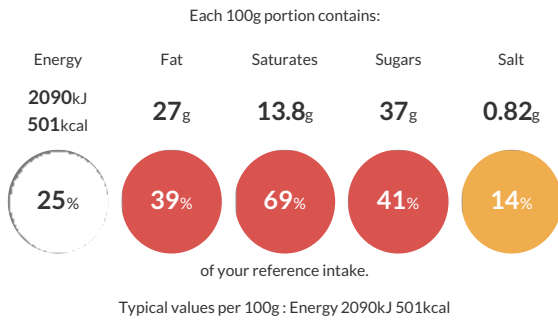
HONEYCOMB TIFFIN (1 x 12 ptn)

Short Product Name:
HONEYCOMB TIFFIN

Crushed digestive biscuits, toffee pieces and honeycomb, bound together in a milk chocolate toffee fudge mixture, topped with milk chocolate and sprinkled with honeycomb and toffee pieces..

Traded Unit GTIN: 5060044074509 Internal GTIN: Supplier: The Handmade Cake Co. Suppliers Product Code: 074509

Reference Intake



Nutritional Information

Typical Values	Per 100g
Energy	2090kJ 501kCal
Carbohydrates	56.7g
of which sugars	37g
Fat	27g
of which saturates	13.8g
Fibre	2.1g
Protein	6.3g
Salt	0.82g

Allergy Information

Key: **Contains** **May Contain**



Dietary Information

Key: **Suitable for**



Allergen Statement

For allergens, including cereals containing gluten, see ingredient in **BOLD**. This product may contain traces of nuts and eggs as it has been made in a bakery that uses these ingredients.

Ingredients

Digestive Biscuits [**WHEAT** Flour (with Calcium Carbonate, Iron, Niacin, Thiamin), Palm Oil, Sugar, Wholemeal **WHEAT** Flour, Partially Inverted Sugar Syrup, Raising Agents (E500, E503), Salt], Milk Chocolate (26%) [Sugar, Cocoa Butter, Whole **MILK** Powder, Cocoa Mass, Emulsifier (**SOYA** Lecithin), Natural Vanilla Flavouring], Sweetened Condensed **MILK**, Vegetable Margarine [Palm Oil, Rapeseed Oil, Water, Salt, Emulsifier (E471), Natural Flavouring], Honeycomb Pieces (2.5%) [Sugar, Glucose Syrup, Water, Raising Agent (Bicarbonate of Soda), Shea Kernel Oil, Palm Oil, Emulsifier (E322)], Toffee Pieces (2.3%) [Sugar, Glucose Syrup, Sweetened Condensed Milk (Whole **MILK**), Sugar], Palm Oil, Butter Oil (**MILK**), Natural Flavouring, Coconut Oil, Glazing Agent (Carnauba Wax)], Toffee Sauce (2.1%) [Glucose Syrup, Invert Sugar Syrup, Sweetened Condensed Skimmed **MILK**], Sugar, Butter Oil (**MILK**), Water, Colour (Caramel), Stabiliser (Pectin), Natural Flavouring], Toffee Flavouring (0.1%).