

Supplier's Product Code :
Product Added :
Last Updated by Supplier :
erudus id :

EC738
11 February 2014
20 April 2021
4f0b0a52942444a4ba767d1cecb8a677



The information on the Erudus System has been supplied by the manufacturers of the products and, whilst the owners of the Erudus System take steps to ensure the information is regularly updated, they give no warranty and no guarantee that the information is accurate. Product information and ingredients may change, please always read product labels carefully in addition to using the information provided by Erudus One.

We do not accept liability for any inaccuracies or incorrect information contained on this site. Please visit <http://www.erudus.com/terms-and-conditions> for full terms and conditions.

Brie West Country Croxton Manor 1.1 Kg

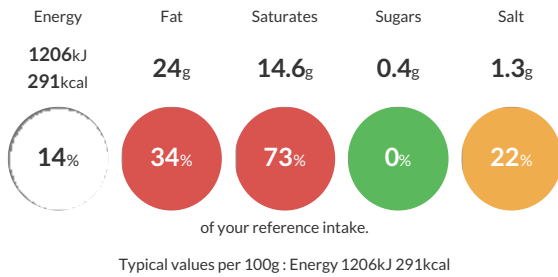
Short Product Name:
Brie

Creamy ripening brie, made using pasteurised Cow's milk.

Traded Unit GTIN: Internal GTIN: Supplier: Cheese Cellar (H&B Foods) Suppliers Product Code: EC738

Reference Intake

Each 100g portion contains:



Nutritional Information

Typical Values	Per 100g
Energy	1206kJ 291kCal
Carbohydrates	0.4g
of which sugars	0.4g
Fat	24g
of which saturates	14.6g
Fibre	0g
Protein	18.3g
Salt	1.3g

Allergy Information

Key: Contains May Contain



Gluten Claim

Gluten content is less than 20ppm.

Allergen Statement

Contains Milk

Ingredients

Pasteurised Cow's MILK, Skimmed MILK Concentrate, Salt, Starter Culture, Coagulant, Yeast Culture, Mould Culture.

Dietary Information

Key: Suitable for

