

Supplier's Product Code :
 Product Added :
 Last Updated by Supplier :
 erudus id :

MIAL80007053
 19 December 2024
 19 December 2024
 4f3f0435dc614e7da795af8fb8d5b96e



The information on the Erudus System has been supplied by the manufacturers of the products and, whilst the owners of the Erudus System take steps to ensure the information is regularly updated, they give no warranty and no guarantee that the information is accurate. Product information and ingredients may change, please always read product labels carefully in addition to using the information provided by Erudus One.

We do not accept liability for any inaccuracies or incorrect information contained on this site. Please visit <http://www.erudus.com/terms-and-conditions> for full terms and conditions.

Alpro Soya Drink for Professionals 12x1ltr

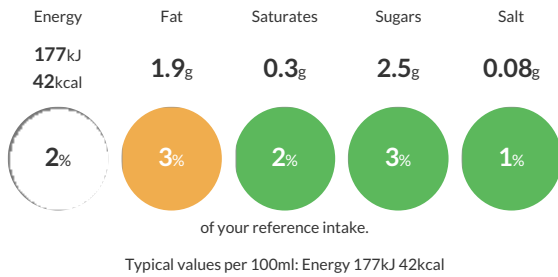
Short Product Name:
 Soya Drink for Professionals

A tasty blend of water and soya beans, with calcium and vitamins.

Traded Unit GTIN: Internal GTIN: Supplier: **Central Supplies Ltd** Suppliers Product Code: **MIAL80007053**

Reference Intake

Each 100ml portion contains:



Nutritional Information

Typical Values	Per 100ml
Energy	177kJ 42kCal
Carbohydrates	2.7g
of which sugars	2.5g
Fat	1.9g
of which saturates	0.3g
Fibre	0.6g
Protein	3.3g
Salt	0.08g

Allergy Information

Key: Contains May Contain

Does Not Contain Cereal/Gluten	Does Not Contain Milk	Does Not Contain Eggs	Does Not Contain Peanuts	Does Not Contain Nuts	Does Not Contain Crustaceans	Does Not Contain Mustard
Does Not Contain Fish	Does Not Contain Lupin	Does Not Contain Sesame	Does Not Contain Celery	Contains Soya	Does Not Contain Molluscs	Does Not Contain Sulphur Dioxide

Dietary Information

Key: Suitable for

Suitable for Vegetarian	Suitable for Vegan	Suitable for Kosher	May not be suitable for Halal	NO DATA for Coeliac
-------------------------	--------------------	---------------------	-------------------------------	---------------------

Ingredients

Water, Hulled SOYA beans (8.7%), Apple extract, Acidity regulators (Monopotassium phosphate, Dipotassium phosphate), Calcium (Calcium carbonate), Sea salt, Stabiliser (Gellan gum), Vitamins (Riboflavin (B2), B12, D2)