

Supplier's Product Code :
Product Added :
Last Updated by Supplier :
erudus id :

SSL228CN
16 February 2021
23 December 2021
4fa09b2dfb664e54997ec0c6f8d8da6f



The information on the **Erudus System** has been supplied by the manufacturers of the products and, whilst the owners of the Erudus System take steps to ensure the information is regularly updated, they give no warranty and no guarantee that the information is accurate. Product information and ingredients may change, please always read product labels carefully in addition to using the information provided by Erudus One.

We do not accept liability for any inaccuracies or incorrect information contained on this site. Please visit <http://www.erudus.com/terms-and-conditions> for full terms and conditions.

Smoked salmon long sliced pack 228 g

Short Product Name:

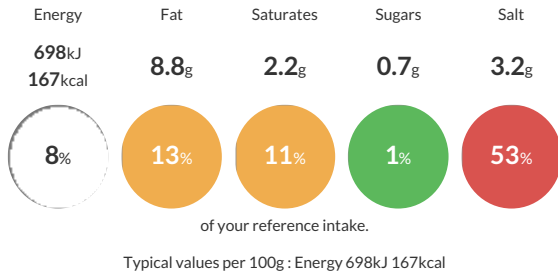
Smoked Salmon Long sliced

Smoked salmon long sliced pack 228 gram, packed in Campbell & Neil pouch.

Traded Unit GTIN: **5021922001017** Internal GTIN: **5021922001017** Supplier: **Severn and Wye Smokery Ltd** Suppliers Product Code: **SSL228CN**

Reference Intake

Each 100g portion contains:



Nutritional Information

Typical Values	Per 100g
Energy	698kJ 167kCal
Carbohydrates	5.2g
of which sugars	0.7g
Fat	8.8g
of which saturates	2.2g
Fibre	<0.5g
Protein	20.1g
Salt	3.2g

Allergy Information

Key: **Contains** **May Contain**



Gluten Claim

Gluten content is less than 20ppm.

Allergen Statement

Allergens in the ingredients list are shown in Bold

Ingredients

Salmon (**Salmo salar**) (**FISH**) (96%), salt, sugar

Dietary Information

Key: **Suitable for**

