

Supplier's Product Code :
 Product Added :
 Last Updated by Supplier :
 erudus id :

WS273
 16 November 2018
 03 February 2023
 511ed6c293da4aa8ae7a6955588ec341



The information on the **Erudus System** has been supplied by the manufacturers of the products and, whilst the owners of the Erudus System take steps to ensure the information is regularly updated, they give no warranty and no guarantee that the information is accurate. Product information and ingredients may change, please always read product labels carefully in addition to using the information provided by Erudus One.

We do not accept liability for any inaccuracies or incorrect information contained on this site. Please visit <http://www.erudus.com/terms-and-conditions> for full terms and conditions.

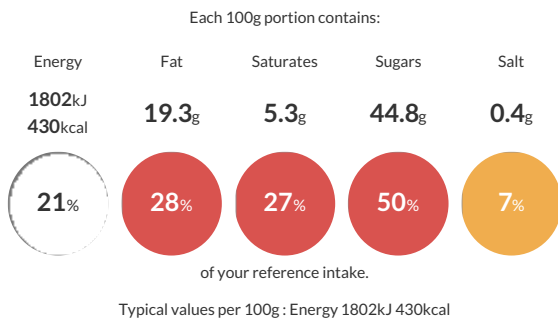
Red Velvet Cake (pre-cut 1x16)

Short Product Name:
 Red Velvet Cake

A frozen cake with three layers of red sponge filled and topped with cream cheese buttercream and decorated with red velvet cake crumbs.

Traded Unit GTIN: **5060082386053** Internal GTIN: Supplier: **Sussex Bakes Ltd T/A More Food** Suppliers Product Code: **WS273**

Reference Intake



Nutritional Information

Typical Values	Per 100g
Energy	1802kJ 430kCal
Carbohydrates	60.3g
of which sugars	44.8g
Fat	19.3g
of which saturates	5.3g
Fibre	0.8g
Protein	3.3g
Salt	0.4g

Allergy Information

Key: **Contains** **May Contain**



Dietary Information

Key: **Suitable for**



Allergen Statement

May contain traces of Nuts, Soya and Gluten (from Oats).

Ingredients

Sugar, Wheat Flour (**WHEAT** Flour, Calcium Carbonate, Iron, Niacin, Thiamin), Pasteurised Whole **EGG**, Rapeseed Oil, Full Fat Soft Cheese (6%) (Whipping Cream (**MILK**), Modified Waxy Maize Starch, Sea Salt, Preservative (Potassium Sorbate)), Water, Butter (**MILK**), Margarine (Vegetable Oils (Palm, Rapeseed), Water, Emulsifier (Mono- and Diglycerides of Fatty Acids)), Humectant (Glycerol), Fat Reduced Cocoa Powder, Modified Maize Starch, Whey Powder (**MILK**), **WHEAT** Gluten, Natural Flavourings, Colours (Carmine, Beetroot Red, Curcumin), Raising Agents (Disodium Diphosphate, Sodium Hydrogen Carbonate), Emulsifiers (Mono- and Diglycerides of Fatty Acids, Sodium Stearoyl-2-lactylate, Propane- 1,2 Diol Esters of Fatty Acids), Lemon Juice.