

Supplier's Product Code :
Product Added :
Last Updated by Supplier :
erudus id :

GRGI400V
18 November 2014
09 March 2023
5154814635364375a0c93346e8ca0d2b



The information on the **Erudus System** has been supplied by the manufacturers of the products and, whilst the owners of the Erudus System take steps to ensure the information is regularly updated, they give no warranty and no guarantee that the information is accurate. Product information and ingredients may change, please always read product labels carefully in addition to using the information provided by Erudus One.

We do not accept liability for any inaccuracies or incorrect information contained on this site. Please visit <http://www.erudus.com/terms-and-conditions> for full terms and conditions.

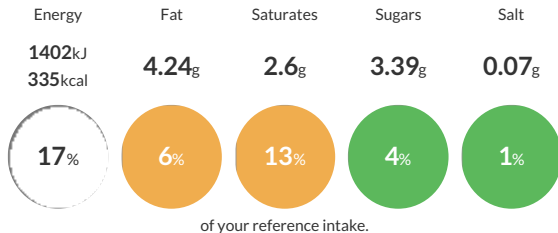
GROUND GINGER 6x400g

Zingiber officinale; Rhizome from the ginger plant that are dried, then ground and steam treated.

Traded Unit GTIN: **05020933127020** Internal GTIN: **5020933122032** Supplier: **Sleaford Quality Foods** Suppliers Product Code: **GRGI400V**

Reference Intake

Each 100g portion contains:



Typical values per 100g : Energy 1402kJ 335kcal

Nutritional Information

Typical Values	Per 100g
Energy	1402kJ 335kCal
Carbohydrates	71.62g
of which sugars	3.39g
Fat	4.24g
of which saturates	2.6g
Fibre	14.1g
Protein	8.98g
Salt	0.07g

Allergy Information

Key: **Contains** **May Contain**



Gluten Claim

Gluten content is less than 20ppm.

Ingredients

Ground Ginger.

Dietary Information

Key: **Suitable for**

