

Supplier's Product Code :
Product Added :
Last Updated by Supplier :
erudus id :

619295
25 July 2024
25 July 2024
517678342a174f66a4896b83894174f2



The information on the Erudus System has been supplied by the manufacturers of the products and, whilst the owners of the Erudus System take steps to ensure the information is regularly updated, they give no warranty and no guarantee that the information is accurate. Product information and ingredients may change, please always read product labels carefully in addition to using the information provided by Erudus One.

We do not accept liability for any inaccuracies or incorrect information contained on this site. Please visit <http://www.erudus.com/terms-and-conditions> for full terms and conditions.

LEE KUM KEE SWEET & SOUR SAUCE 2X2.3KG

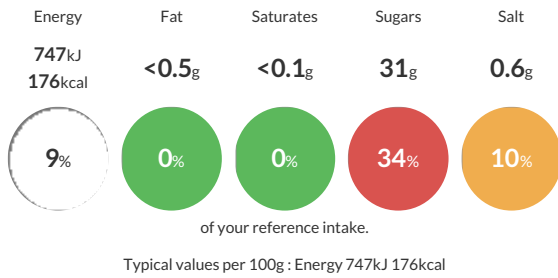
Short Product Name:
SWEET & SOUR SAUCE

Sweet & Sour Sauce calls for a well-balanced use of ingredients to achieve the just-right sweet and sour taste profile. This version is a delicate blend of Pineapple juice, Tomato paste and other essential ingredients for the all-time classic.

Traded Unit GTIN: 60078895133297 Internal GTIN: 0078895133295 Supplier: Petty Wood & Co Suppliers Product Code : 619295

Reference Intake

Each 100g portion contains:



Nutritional Information

Typical Values	Per 100g
Energy	747kJ 176kCal
Carbohydrates	43g
of which sugars	31g
Fat	<0.5g
of which saturates	<0.1g
Fibre	<0.5g
Protein	<0.5g
Salt	0.6g

Allergy Information

Key: Contains May Contain



Allergen Statement

FOR ALLERGENS SEE INGREDIENTS IN BOLD/CAPITALS.

Ingredients

Water, Sugar, Dried Glucose Syrup, Pineapple Juice Concentrate 7% (concentrated pineapple juice 85%, water). Tomato Paste 4%, Modified Corn Starch, Acid (Acetic Acid). Salt, Colours (Paprika Extract, Carotene). Stabilizer (Xanthan Gum (**SOYBEANS, WHEAT**)).

Dietary Information

Key: Suitable for

