

Supplier's Product Code :  
 Product Added :  
 Last Updated by Supplier :  
 erudus id :

AV05302  
 11 March 2025  
 11 March 2025  
 526363477f9847368a39d6ccabb359fe



The information on the **Erudus System** has been supplied by the manufacturers of the products and, whilst the owners of the Erudus System take steps to ensure the information is regularly updated, they give no warranty and no guarantee that the information is accurate. Product information and ingredients may change, please always read product labels carefully in addition to using the information provided by Erudus One.

We do not accept liability for any inaccuracies or incorrect information contained on this site. Please visit <http://www.erudus.com/terms-and-conditions> for full terms and conditions.

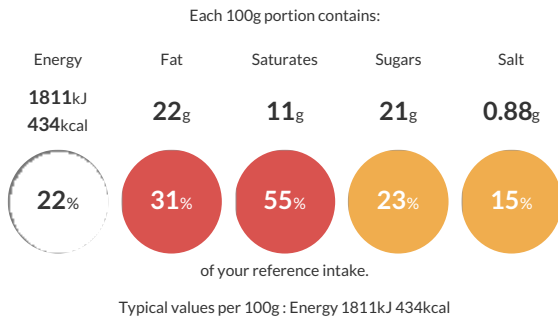
## Belgian Waffles 20x90g

Short Product Name:  
 Belgian Waffles

Sweet Belgian Waffle Plain (Liege type).

Traded Unit GTIN: **5060177080613** Internal GTIN: Supplier: **The Foodfellas** Suppliers Product Code: **AV05302**

### Reference Intake



### Nutritional Information

Typical Values	Per 100g
Energy	1811kJ 434kCal
Carbohydrates	51g
of which sugars	21g
Fat	22g
of which saturates	11g
Fibre	1.9g
Protein	5.7g
Salt	0.88g

### Allergy Information

Key: **Contains** **May Contain**



### Dietary Information

Key: **Suitable for**



### Allergen Statement

May contain traces of **MILK**

### Ingredients

WHEAT Flour, Margarine (Palm Fat, Coconut Fat, Water, Rapeseed Oil, Emulsifier (Mono- And Diglycerides Of Fatty Acids)), Sugar, Water, **EGGS**, Invert Sugar, Yeast, **SOYA** Flour, Salt, Emulsifier (**SOYA** Lecithin) Flavouring (Vanillin)