

Supplier's Product Code :
Product Added :
Last Updated by Supplier :
erudus id :

SASABQ057/0032 (80)
25 November 2020
22 August 2023
53288debe3124dcfac551c002d65319b



The information on the Erudus System has been supplied by the manufacturers of the products and, whilst the owners of the Erudus System take steps to ensure the information is regularly updated, they give no warranty and no guarantee that the information is accurate. Product information and ingredients may change, please always read product labels carefully in addition to using the information provided by Erudus One.

We do not accept liability for any inaccuracies or incorrect information contained on this site. Please visit <http://www.erudus.com/terms-and-conditions> for full terms and conditions.

Sachet BBQ Sauce 32g (80)

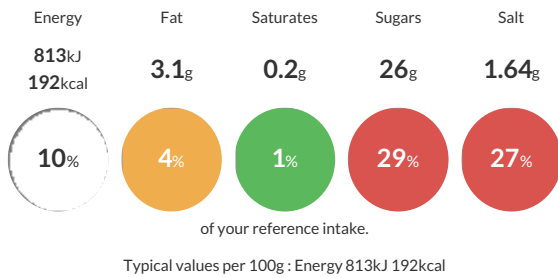
Short Product Name:

A thick, smoky sauce with a molasses-style sweetness. Use as an accompaniment, a marinade or a dipping sauce.

Traded Unit GTIN: **5060092697873** Internal GTIN: **5060092695077** Supplier : **Stokes Sauces** Suppliers Product Code : **SASABQ057/0032 (80)**

Reference Intake

Each 100g portion contains:



Nutritional Information

| Typical Values | Per 100g |
|--------------------|------------------|
| Energy | 813kJ 192kCal |
| Carbohydrates | 38.6g |
| of which sugars | 26g |
| Fat | 3.1g |
| of which saturates | 0.2g |
| Fibre | 0.8g |
| Protein | 1.9g |
| Salt | 1.64g |

Allergy Information

Key: **Contains** **May Contain**



Gluten Claim

Gluten content is less than 20ppm.

Dietary Information

Key: **Suitable for**



Ingredients

Tomato Puree, Sugar and Cane Molasses (21%), Water, Spirit Vinegar, Honey (5%), Black Treacle (4%), Rapeseed Oil, Seasoning 2% (Salt, Sugar, Smoke Powder Smoke Flavouring), Honey Powder, Tomato Powder, Thickener: Modified Maize Starch. Natural Flavouring Extracts, Smoke Flavouring, Garlic Powder, Onion Powder, Spices, **BARLEY** Malt Extract, Stabiliser: (Xanthan Gum). Thickener: Modified Maize Starch. Garlic Puree, Preservative: Sorbic Acid.